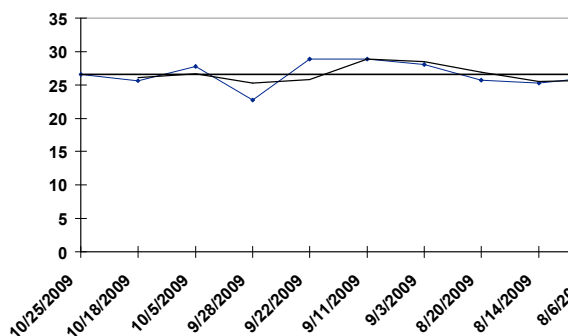


WDB 11/02/09 RACE: 1 1 MILE T

1 VINCENNE

- br 3YO g PP 1 Zeron, Richard

Date	Trk	Cond	Driver	Class	PP	Fin	Last Q	Layoff Days	TS
10/25/09	WDB	FT	Zeron,	NW2R15000LCD	10	5	28.80	7	26.529
10/18/09	WDB	FT	Zeron,	ON-GR-STRTRS	6	8	29.20	13	25.578
10/05/09	MOH	FT	Zeron,	NW2R16000LCD	2	8	30.20	7	27.803
09/28/09	MOH	GD	Zeron,	ON-GR-STRTRS	4	5	32.60	6	22.765
09/22/09	GEOD	FT	Zeron,	ONSS-RS	3	3	30.60	11	28.905
09/11/09	GEOD	FT	Clements,	NW1R10000LCD	3	1	31.40	8	28.912
09/03/09	MOH	FT	Zeron, Scott	NW1R8000LCD	4	3	28.40	14	28.044
08/20/09	MOH	GD	Zeron,	NW1R8000LCD	8	3	29.20	6	25.736
08/14/09	MOH	FT	Zeron,	QUA	7	7	30.00	8	25.287
08/06/09	MOH	FT	Zeron,	NW1R8000LCD	5	9	29.80		26.198

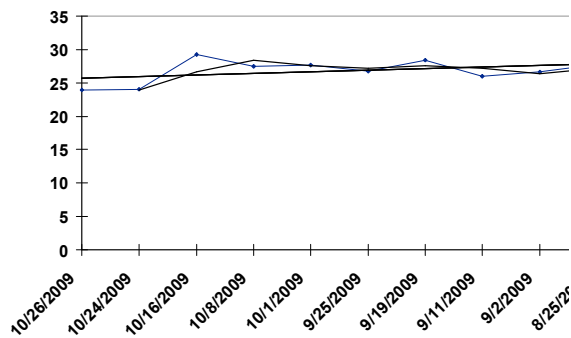


WDB 11/02/09 RACE: 1 1 MILE T

2 ZIGGY JIGGY

- br 3YO f PP 2 Jamieson, Jody C

Date	Trk	Cond	Driver	Class	PP	Fin	Last Q	Layoff Days	TS
10/26/09	GRVR	FT	Mackenzie,	ON-GR-STRTRS	2	1	33.00	2	23.943
10/24/09	FLMD	FT	Mackenzie,	NW2R15000LCD	6	3	31.80	8	24.004
10/16/09	GEOD	FT	Mackenzie,	ONSS-RS	7	5	29.80	8	29.284
10/08/09	WDB	FT	Condren,	NW2R15500LCD	8	6	30.20	7	27.461
10/01/09	FLMD	FT	Mackenzie,	NW2R15000LCD	6	3	29.80	6	27.685
09/25/09	FLMD	FT	Mackenzie,	QUA	2	3	30.20	6	26.722
09/19/09	FLMD	FT	Mackenzie,	NW2R15000LCD	4	7	30.40	8	28.405
09/11/09	GEOD	FT	Sheppard,	10000CLMSTK	7	8	34.20	9	26.027
09/02/09	FLMD	FT	Sheppard,	ONSS-RS	6	4	30.20	8	26.689
08/25/09	GEOD	FT	Sheppard,	NW1R10000LCD	7	4	30.00		27.750

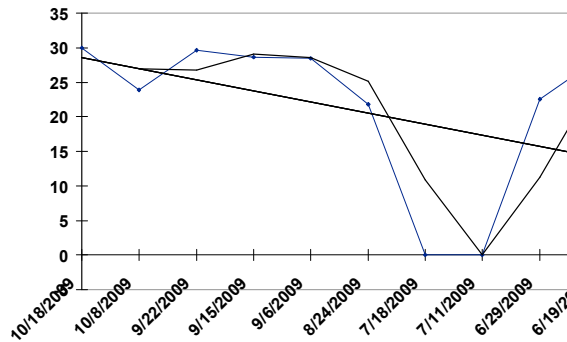


WDB 11/02/09 RACE: 1 1 MILE T

3 PIRACY

- b 3YO g PP 3 Macdonald, Mark J

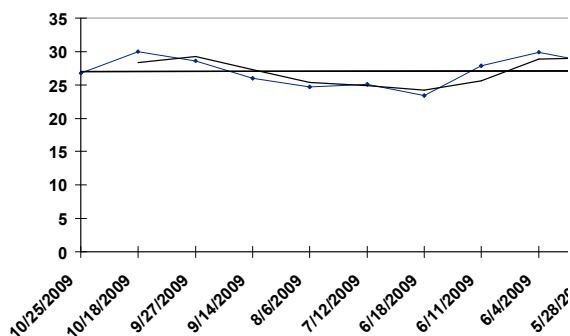
Date	Trk	Cond	Driver	Class	PP	Fin	Last Q	Layoff Days	TS
10/18/09	WDB	FT	Macdonell,	ON-GR-STRTRS	3	3	29.60	10	29.989
10/08/09	FLMD	FT	Coulter,	ONSS-RS	8	4	31.60	16	23.847
09/22/09	GEOD	FT	Jamieson,	ONSS-RS	1	4	31.40	7	29.578
09/15/09	GEOD	FT	Jamieson,	12000CLMCD	8	3	31.00	9	28.592
09/06/09	CLNT	FT	Jamieson,	ONSS-RS	1	2	29.80	13	28.480
08/24/09	GRVR	FT	Davis,	NW20000LCD	6	8	31.40	37	21.818
07/18/09	WODS	GD	Davis,	OXFORDCOUNTY	4	3	30.80	7	
07/11/09	WODS	FT	Davis,	OXFORDCOUNTY	4	5	30.60	12	
06/29/09	GRVR	GD	Davis,	NW20000LCD	8	5	31.40	10	22.541
06/19/09	LON	FT	Davis,	CITY LONDON	2	3	30.00		28.244



WDB 11/02/09 RACE: 1 1 MILE T

4 NOW YOU SEE HIM - b 3YO c PP 4 Ouellette, Luc R

Date	Trk	Cond	Driver	Class	PP	Fin	Last Q	Layoff Days	TS
10/25/09	WDB	FT	Ouellette,	NW2R35000LCD	8	7	29.20	7	26.729
10/18/09	WDB	FT	Ouellette,	ON-GR-STRTRS	9	6	30.00	21	29.982
09/27/09	MOH	FT	Kerwood,	NW2R35000LCD	1	10	30.40	13	28.568
09/14/09	MOH	FT	Filion,	QUA	4	3	30.20	39	25.964
08/06/09	RIDC	FT	Mcdonald, Ted	NW2R30000LCD	8	6	32.40	25	24.666
07/12/09	RIDC	GD	Mcdonald, Ted	ONSS-RS	2	3	32.20	24	25.059
06/18/09	RIDC	SY	Mcdonald, Ted	NW2R30000LCD	3	9	31.40	7	23.388
06/11/09	MOH	GD	Condren,	NW2R30000LCD	2	3	30.40	7	27.848
06/04/09	MOH	FT	Ritchie,	NW2R15000LCD	6	2	28.60	7	29.921
05/28/09	MOH	SY	Condren,	NW2R16000LCD	4	1	29.00		28.240

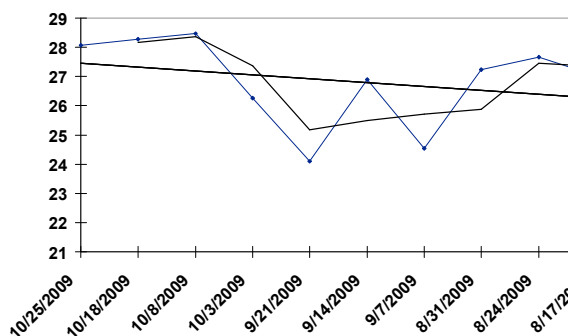


WDB 11/02/09 RACE: 1 1 MILE T

5 WHATNBLAZES

- b 3YO c PP 5 Baillargeon, Mario J

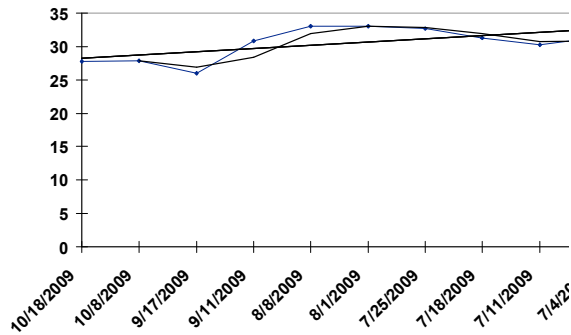
Date	Trk	Cond	Driver	Class	PP	Fin	Last Q	Layoff Days	TS
10/25/09	WDB	FT	Zeron, Scott	NW2R35000LCD	4	3	28.20	7	28.062
10/18/09	WDB	FT	Jamieson,	NW2R15000LCD	6	2	28.80	10	28.268
10/08/09	FLMD	FT	Zeron, Scott	ONSS-RS	2	2	30.60	5	28.471
10/03/09	FLMD	FT	Jamieson,	NW2R15000LCD	5	1	33.20	12	26.270
09/21/09	GRVR	SY	Zeron, Scott	NW6000LCD	1	2	30.40	7	24.101
09/14/09	MOH	FT	Cadieux,	QUA	9	3	29.20	7	26.906
09/07/09	GRVR	FT	Cadieux,	NW6000LCD	9	5	31.20	7	24.535
08/31/09	MOH	FT	Cadieux,	QUA	4	3	30.40	7	27.234
08/24/09	MOH	FT	Cadieux,	QUA	7	4	30.40	7	27.671
08/17/09	MOH	FT	Cadieux,	NW1R9500LCD	8	9	30.20		27.026



WDB 11/02/09 RACE: 1 1 MILE T

6 STRUCTURE FIRE - bl 3YO g PP 6 Brewer, Jason J

Date	Trk	Cond	Driver	Class	PP	Fin	Last Q	Layoff Days	TS
10/18/09	WDB	FT	Brewer, Jason	ON-GR-STRTRS	2	4	28.80	10	27.793
10/08/09	FLMD	FT	Brewer, Jason	ONSS-RS	2	1	31.20	21	27.829
09/17/09	RIDC	FT	Brewer, Jason	ONSS-GE	8	6	29.60	6	26.008
09/11/09	MOH	FT	Brewer, Jason	QUA	1	2	28.00	34	30.787
08/08/09	MOH	SY	Brewer, Jason	D-ONSS-GF	4	3	28.80	7	33.095
08/01/09	MOH	FT	Brewer, Jason	ONSS-GE	8	1	28.40	7	33.063
07/25/09	MOH	GD	Brewer, Jason	CDN BREEDERS	1	5	28.00	7	32.633
07/18/09	MOH	FT	Brewer, Jason	CDN BREEDERS	2	3	28.80	7	31.274
07/11/09	GEOD	FT	Brewer, Jason	NW3R60000LCD	4	3	30.60	7	30.224
07/04/09	GEOD	FT	Brewer, Jason	ONSS-GE	2	4	29.40		31.366

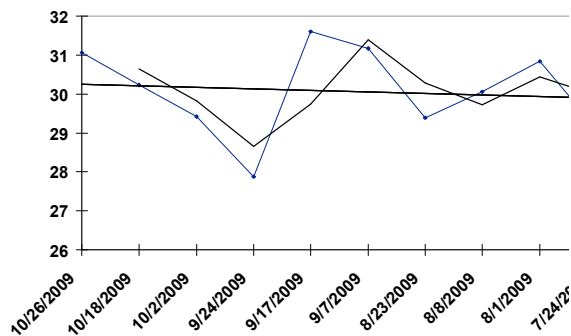


WDB 11/02/09 RACE: 1 1 MILE T

7 P L COOPER

- br 3YO g PP 7 Filion, Sylvain R

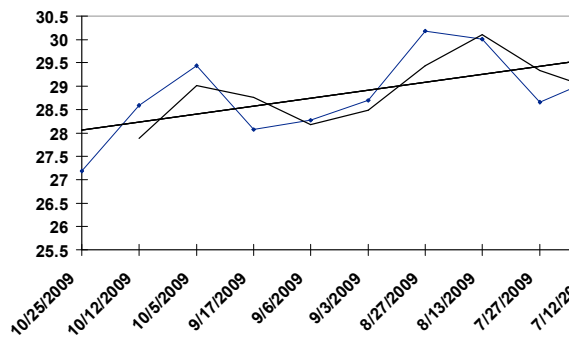
Date	Trk	Cond	Driver	Class	PP	Fin	Last Q	Layoff Days	TS
10/26/09	WDB	FT	Filion,	NW4R100000L	9	3	27.60	8	31.065
10/18/09	WDB	FT		ON-GR-STRTRS	0	-7	29.80	16	30.226
10/02/09	LON	GD	Clements,	ONSS-GE	1	7	28.40	8	29.426
09/24/09	RIDC	FT	Clements,	ONSS-GF	8	4	29.60	7	27.879
09/17/09	RIDC	FT	Clements,	ONSS-GE	2	3	28.00	10	31.602
09/07/09	MOH	FT	Clements,	NW3R60000LCD	7	1	28.00	15	31.173
08/23/09	MOH	FT	Clements,	NW3R60000LCD	10	5	27.80	15	29.397
08/08/09	MOH	SY	Filion,	D-ONSS-GF	5	2	28.80	7	30.060
08/01/09	MOH	FT	Filion,	ONSS-GE	3	3	27.80	8	30.832
07/24/09	MOH	GD	Jamieson,	3YR-COND	1	1	29.20		29.087



WDB 11/02/09 RACE: 1 1 MILE T

8 MAESTRO SPRINGS - br 3YO g PP 8 Waples, Randall W

Date	Trk	Cond	Driver	Class	PP	Fin	Last Q	Layoff Days	TS
10/25/09	WDB	FT	Ouellette,	NW2R15000LCD	6	9	29.60	13	27.186
10/12/09	WDB	FT	Ouellette,	NW2R15000LCD	1	5	29.20	7	28.593
10/05/09	MOH	FT	Jamieson,	NW2R16000LCD	3	6	30.40	18	29.441
09/17/09	MOH	FT	Ouellette,	NW2R15000LCD	2	10	32.00	11	28.075
09/06/09	CLNT	FT	Howlett,	ONSS-RS	8	4	30.00	3	28.272
09/03/09	MOH	FT	Ouellette,	NW2R15000LCD	6	7	29.80	7	28.695
08/27/09	MOH	FT	Ouellette,	NW2R15000LCD	1	4	28.40	14	30.187
08/13/09	MOH	FT	Ouellette,	NW1R8000LCD	1	1	28.80	17	30.010
07/27/09	MOH	FT	Ouellette,	QUA	7	3	29.60	15	28.663
07/12/09	RIDC	GD		ONSS-RS	0	-7	30.00		29.189

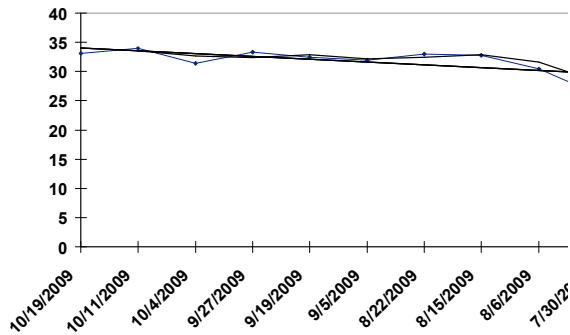




WDB 11/02/09 RACE: 2 1 MILE P

1 SMOKEYS LUCK - b 4YO g PP 1 Macdonald, Mark J

Date	Trk	Cond	Driver	Class	PP	Fin	Last Q	Layoff Days	TS
10/19/09	WDB	FT	Macdonald,	NW12000L6CD	2	2	28.80	8	33.092
10/11/09	WR	FT	Williams,	NW2401L3CD	2	1	29.00	7	33.901
10/04/09	WR	GD	Williams,	NW5000L5CD	3	4	29.40	7	31.378
09/27/09	WR	FT	Williams,	NW3500L5CD	5	2	30.20	8	33.343
09/19/09	HP	FT	Harmon,	NW5000L5CD	6	7	28.80	14	32.470
09/05/09	HP	FT	Harmon,	OPEN	1	7	30.60	14	31.895
08/22/09	HP	FT	Harmon,	OPEN	2	6	29.60	7	32.985
08/15/09	HP	FT	Harmon,	INVITE HC	6	6	28.40	9	32.803
08/06/09	SAR	FT	Williams,	QUA-T&P	6	1	29.80	7	30.492
07/30/09	SAR	FT	Hardy, Ken W	QUA	4	4	29.40		26.181

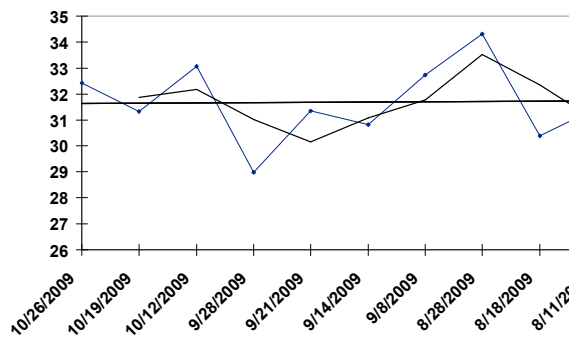


WDB 11/02/09 RACE: 2 1 MILE P

2 KEEP IT COVERT

- b 4YO g PP 2 Drury, Jonathan L

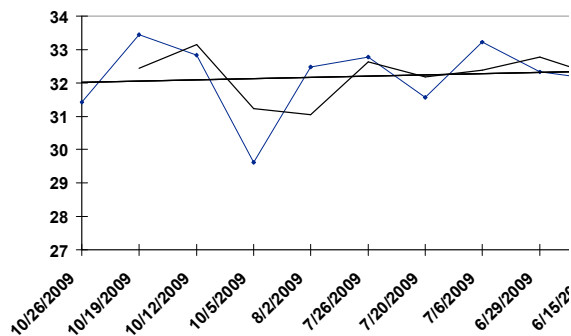
Date	Trk	Cond	Driver	Class	PP	Fin	Last Q	Layoff Days	TS
10/26/09	WDB	FT	Drury,	NW12000L6CD	8	2	27.20	7	32.416
10/19/09	WDB	FT	Drury,	NW12000L6CD	5	9	28.60	7	31.315
10/12/09	WDB	FT	Drury,	NW6000L6CD	3	1	28.40	14	33.055
09/28/09	MOH	GD	Drury,	NW6000L6CD	7	6	29.20	7	28.973
09/21/09	MOH	GD	Drury,	NW6000L6CD	6	3	27.80	7	31.344
09/14/09	MOH	FT	Drury,	NW2R17000LCD	10	2	28.00	6	30.825
09/08/09	GEOD	FT	Drury,	NW4000L5CD	8	6	29.00	11	32.744
08/28/09	GEOD	FT	Byron, Aaron	OP8000CLM	4	4	29.00	10	34.297
08/18/09	KD	GD	Byron, Aaron	OP10000CLM	1	5	30.40	7	30.390
08/11/09	KD	FT	Brown, Gord D	NW2750L6CD	3	3	28.80		31.471



WDB 11/02/09 RACE: 2 1 MILE P

3 FLAMING PRINCE - b 4YO g PP 3 Hudon, Phillip

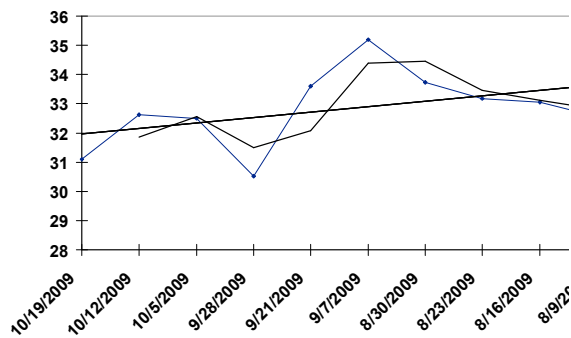
Date	Trk	Cond	Driver	Class	PP	Fin	Last Q	Layoff Days	TS
10/26/09	WDB	FT	Hudon,	NW3R54000LCD	5	7	28.60	7	31.428
10/19/09	WDB	FT	Hudon,	NW3R50000LCD	7	2	28.60	7	33.442
10/12/09	WDB	FT	Hudon,	NW6000L6CD	5	2	28.00	7	32.836
10/05/09	MOH	GD	Hudon,	QUA	3	3	28.80	64	29.624
08/02/09	MOH	FT	Shepherd,	NW12000L6CD	5	9	28.00	7	32.475
07/26/09	MOH	GD	Shepherd,	NW12000L6CD	6	4	28.00	6	32.779
07/20/09	MOH	FT	Macdonell,	NW3R51000LCD	3	7	27.20	14	31.565
07/06/09	MOH	FT	Hudon,	NW3R50000LCD	5	5	28.60	7	33.215
06/29/09	MOH	GD	Hudon,	NW3R50000LCD	3	5	29.80	14	32.336
06/15/09	MOH	FT	Jamieson,	NW3R50000LCD	1	4	28.80		32.102



WDB 11/02/09 RACE: 2 1 MILE P

4 THE COMEBACK KID - b 4YO g PP 4 Moiseyev, Jack G

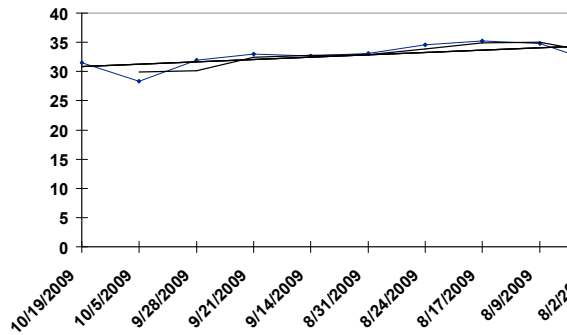
Date	Trk	Cond	Driver	Class	PP	Fin	Last Q	Layoff Days	TS
10/19/09	WDB	FT	Moiseyev,	NW12000L6CD	7	6	28.00	7	31.096
10/12/09	WDB	FT	Moiseyev,	NW12000L6CD	5	3	27.60	7	32.629
10/05/09	MOH	FT	Moiseyev,	NW12000L6CD	6	3	27.80	7	32.494
09/28/09	MOH	GD	Moiseyev,	NW13000L6CD	2	3	29.80	7	30.522
09/21/09	MOH	GD	Moiseyev,	NW6000L6CD	1	2	29.00	14	33.607
09/07/09	MOH	FT		NW12000L6CD	0	-7	28.20	8	35.187
08/30/09	MOH	FT	Moiseyev,	NW6000L6CD	3	3	28.20	7	33.721
08/23/09	MOH	FT	Moiseyev,	NW6000L6CD	1	3	28.60	7	33.177
08/16/09	MOH	FT	Waples,	NW6100L6CD	8	2	27.60	7	33.057
08/09/09	MOH	FT	Silverman,	NW6000L6CD	10	7	26.80		32.567



WDB 11/02/09 RACE: 2 1 MILE P

5 MCTAC TOE - b 4YO g PP 5 Brewer, Jason J

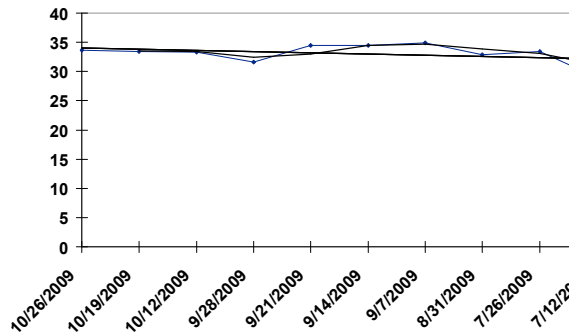
Date	Trk	Cond	Driver	Class	PP	Fin	Last Q	Layoff Days	TS
10/19/09	WDB	FT	Brewer, Jason	NW12000L6CD	3	9	28.20	14	31.515
10/05/09	MOH	FT	Brewer, Jason	NW12000L6CD	9	9	29.60	7	28.316
09/28/09	MOH	GD	Brewer, Jason	NW13000L6CD	7	2	29.40	7	31.982
09/21/09	MOH	GD	Brewer, Jason	NW12000L6CD	1	3	28.40	7	32.987
09/14/09	MOH	FT	Brewer, Jason	NW15000L6CD	6	7	27.20	14	32.627
08/31/09	MOH	FT	Brewer, Jason	NW4R115000L	4	3	27.20	7	33.057
08/24/09	MOH	FT	Brewer, Jason	NW15100L6CD	8	3	27.60	7	34.587
08/17/09	MOH	FT	Brewer, Jason	NW12500L6CD	6	3	28.60	8	35.263
08/09/09	MOH	FT	McNair,	NW6000L6CD	5	1	28.20	7	34.846
08/02/09	MOH	FT	Filion,	NW6000L6CD	7	3	28.20		31.527



WDB 11/02/09 RACE: 2 1 MILE P

6 MASTER CHARGE - b 4YO g PP 6 Filion, Sylvain R

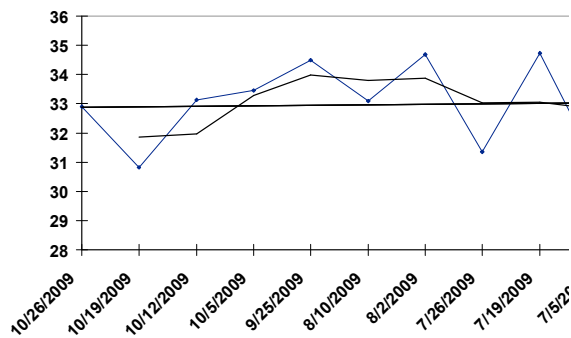
Date	Trk	Cond	Driver	Class	PP	Fin	Last Q	Layoff Days	TS
10/26/09	WDB	FT	Filion,	NW12000L6CD	7	5	28.20	7	33.668
10/19/09	WDB	FT	Jamieson,	NW12000L6CD	10	8	29.40	7	33.474
10/12/09	WDB	FT	Filion,	NW4R100000L	2	4	28.40	14	33.361
09/28/09	MOH	GD	Waples,	NW13000L6CD	8	8	31.80	7	31.571
09/21/09	MOH	GD	Waples,	NW16000L6CD	3	3	27.80	7	34.454
09/14/09	MOH	FT	Waples,	NW15000L6CD	2	2	27.40	7	34.473
09/07/09	MOH	FT	Waples,	NW12000L6CD	6	4	29.00	7	34.897
08/31/09	MOH	FT	Waples,	QUA	1	1	29.00	36	32.880
07/26/09	MOH	GD	Waples,	NW12000L6CD	10	1	28.80	14	33.392
07/12/09	MOH	FT	Brewer, Jason	NW12000L6CD	9	10	29.20		28.935



WDB 11/02/09 RACE: 2 1 MILE P

7 GRAVEL CRUSHER - b 4YO g PP 7 Ouellette, Luc R

Date	Trk	Cond	Driver	Class	PP	Fin	Last Q	Layoff Days	TS
10/26/09	WDB	FT	Ouellette,	NW12000L6CD	4	3	28.00	7	32.892
10/19/09	WDB	FT	Ouellette,	NW12000L6CD	9	7	27.40	7	30.827
10/12/09	WDB	FT	Ouellette,	NW12000L6CD	4	4	28.40	7	33.130
10/05/09	MOH	FT	Ouellette,	NW12000L6CD	7	4	28.60	10	33.455
09/25/09	MOH	FT	Moiseyev,	QUA	5	3	27.00	46	34.495
08/10/09	MOH	FT	Waples,	NW12000L6CD	3	8	27.60	8	33.101
08/02/09	MOH	FT	Waples,	NW12000L6CD	7	2	27.40	7	34.675
07/26/09	MOH	GD	Macdonald,	NW12000L6CD	9	7	28.00	7	31.363
07/19/09	MOH	FT	Hudon,	NW12000L6CD	5	2	27.80	14	34.726
07/05/09	MOH	FT	Hudon,	NW12000L6CD	9	10	28.00		30.889

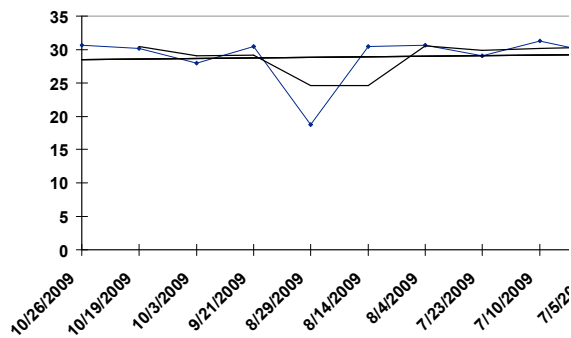


WDB 11/02/09 RACE: 3 1 MILE T

1 SMASHED

- br 6YO h PP 1 Hudon, Phillip

Date	Trk	Cond	Driver	Class	PP	Fin	Last Q	Layoff Days	TS
10/26/09	WDB	FT	Hudon,	20000CLMHP	3	3	27.60	7	30.652
10/19/09	WDB	FT	Hudon,	20000CLMHP	4	5	30.00	16	30.183
10/03/09	MOH	GD	Hudon,	20000CLMHP	5	5	30.20	12	27.936
09/21/09	MOH	GD	Baillargeon,	15000CLM	5	1	29.60	23	30.459
08/29/09	GEOD	FT	Baillargeon,	X CHALLENGE	2	3	111.00	15	18.722
08/14/09	GEOD	FT	Byron,	OP11000CLM	8	9	30.80	10	30.453
08/04/09	GEOD	FT	Baillargeon,	OP11000CLM	9	3	29.00	12	30.661
07/23/09	MOH	FT	Baillargeon,	20000CLMHP	5	9	30.20	13	29.068
07/10/09	MOH	FT	Baillargeon,	20000CLMHP	1	2	28.80	5	31.312
07/05/09	MOH	FT	Baillargeon,	15000CLM	3	1	30.40		29.409

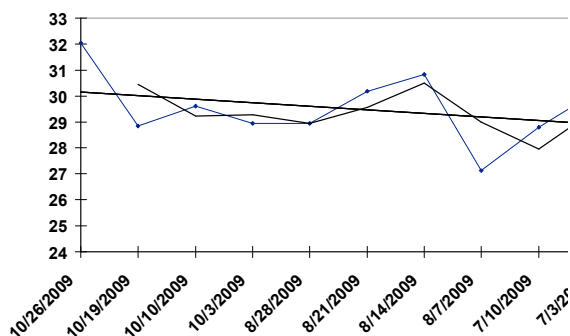




WDB 11/02/09 RACE: 3 1 MILE T

2 BORN BELIEVER - b 8YO g PP 2 Zeron, Richard

Date	Trk	Cond	Driver	Class	PP	Fin	Last Q	Layoff Days	TS
10/26/09	WDB	FT	Zeron,	20000CLMHP	1	2	28.00	7	32.041
10/19/09	WDB	FT	Zeron,	20000CLMHP	5	2	29.20	9	28.856
10/10/09	WDB	FT	Zeron,	20000CLMHP	6	8	28.40	7	29.607
10/03/09	MOH	GD	Zeron,	20000CLMHP	2	4	29.20	36	28.941
08/28/09	MOH	FT	Zeron,	20000CLMHP	3	4	29.60	7	28.941
08/21/09	MOH	FT	Zeron,	20000CLMHP	1	3	28.80	7	30.174
08/14/09	MOH	FT	Zeron,	24000CLMHP	4	6	28.00	7	30.825
08/07/09	MOH	FT	Zeron,	25000CLMHP	6	7	28.80	28	27.133
07/10/09	MOH	FT	Zeron,	24000CLMHP	5	8	29.40	7	28.809
07/03/09	MOH	FT	Zeron,	25000CLMHP	6	2	29.60		30.149

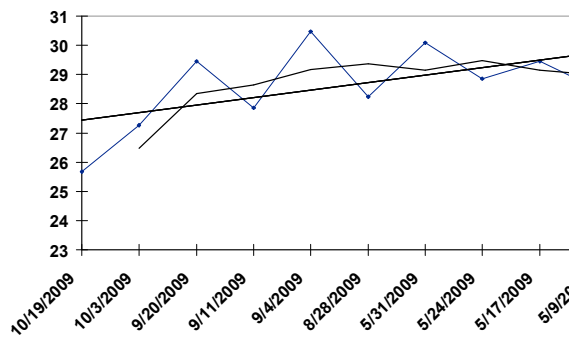


WDB 11/02/09 RACE: 3 1 MILE T

3 RUSH FAN

- b 6YO g PP 3 Moiseyev, Jack G

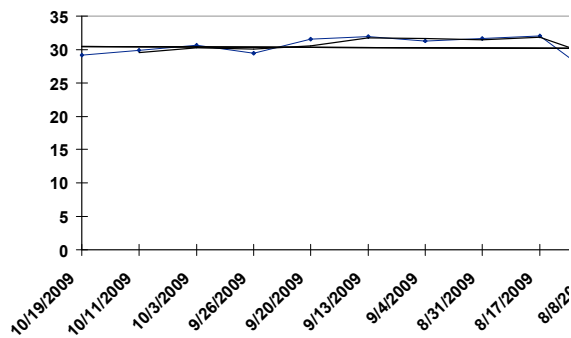
Date	Trk	Cond	Driver	Class	PP	Fin	Last Q	Layoff Days	TS
10/19/09	WDB	FT	Drury,	OP30000CLM	5	10	29.80	16	25.684
10/03/09	MOH	GD	Moiseyev,	OP30000CLM	10	7	30.00	13	27.272
09/20/09	MOH	FT	Moiseyev,	25000CLMHP	6	2	27.40	9	29.441
09/11/09	MOH	FT	Guitard,	QUA	5	7	28.20	7	27.867
09/04/09	MOH	FT	Forward, Brad	30000CLMHP	8	8	28.00	7	30.465
08/28/09	MOH	FT	Guitard,	QUA	5	5	29.00	89	28.246
05/31/09	MOH	FT	Christoforou,	NW18000L6CD	2	5	28.80	7	30.079
05/24/09	MOH	FT	Moiseyev,	NW12000L6CD	5	3	29.60	7	28.853
05/17/09	MOH	FT	Moiseyev,	NW12000L6CD	7	2	27.60	8	29.441
05/09/09	MOH	FT	Moiseyev,	NW8000L6CD	5	1	29.80		28.524



WDB 11/02/09 RACE: 3 1 MILE T

4 JCS KADABRA - b 4YO m PP 4 Jamieson, Jody C

Date	Trk	Cond	Driver	Class	PP	Fin	Last Q	Layoff Days	TS
10/19/09	WDB	FT	Brewer, Jason	NW3R60000LCD	5	6	30.60	8	29.157
10/11/09	WDB	FT	Jamieson,	NW3R60000LCD	4	3	29.40	8	29.901
10/03/09	MOH	GD	Waples,	20000CLMHP	6	2	30.00	7	30.674
09/26/09	MOH	GD	Waples,	20000CLMHP	3	2	30.20	6	29.428
09/20/09	MOH	FT	Waples,	20000CLMHP	1	3	28.60	7	31.584
09/13/09	MOH	FT	Waples,	NW2R35000LCD	5	1	29.80	9	31.925
09/04/09	MOH	FT	Waples,	20000CLMHP	4	4	28.60	4	31.299
08/31/09	MOH	FT	Waples,	NW2R35000LCD	4	3	28.40	14	31.698
08/17/09	MOH	FT	Waples,	15000CLM	8	1	29.20	9	32.001
08/08/09	SAR	GD	Stutzman,	OP15000CLM	3	7	31.40		25.722

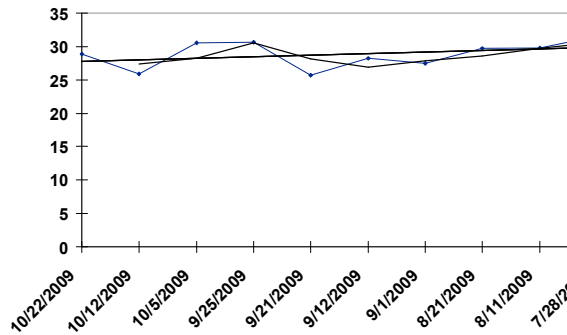


WDB 11/02/09 RACE: 3 1 MILE T

5 CHI CHI CHIP

- br 4YO g PP 5 Baillargeon, Mario J

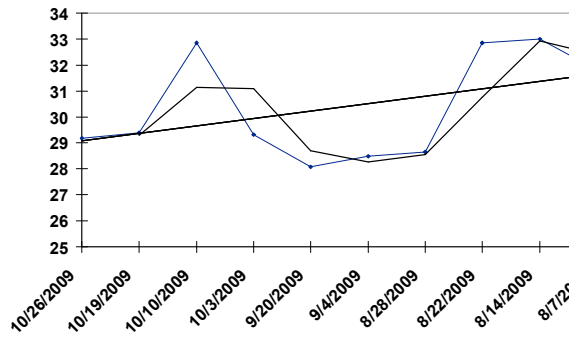
Date	Trk	Cond	Driver	Class	PP	Fin	Last Q	Layoff Days	TS
10/22/09	WDB	FT	Zeron,	15000CLM	3	1	29.40	10	28.875
10/12/09	WDB	FT	Zeron,	15000CLM	1	8	30.20	7	25.859
10/05/09	MOH	FT	Zeron,	15000CLM	9	3	30.40	10	30.572
09/25/09	MOH	FT	Zeron,	QUA	5	1	29.60	4	30.591
09/21/09	MOH	GD	Zeron,	15000CLM	1	5	29.40	9	25.717
09/12/09	FLMD	FT	Mackenzie,	OP15000CLM	5	1	30.60	11	28.209
09/01/09	GEOD	FT	Zeron,	12000CLMCD	4	1	31.40	11	27.469
08/21/09	GEOD	FT	Maltby,	NW4000L5CD	8	6	30.00	10	29.663
08/11/09	GEOD	FT	Jones, Keith	NW4000L5CD	2	4	29.60	14	29.767
07/28/09	GEOD	GD	Jones, Keith	NW4000L4CD	4	8	29.60		31.562



WDB 11/02/09 RACE: 3 1 MILE T

6 BABE THE HORSE - b 4YO g PP 6 Macdonald, Mark J

Date	Trk	Cond	Driver	Class	PP	Fin	Last Q	Layoff Days	TS
10/26/09	WDB	FT	Filion,	23000CLMHP	7	4	27.40	7	29.188
10/19/09	WDB	FT	Jamieson,	23000CLMHP	6	3	30.20	9	29.388
10/10/09	GEOD	FT	Clements,	NW3R60000LCD	3	2	30.00	7	32.861
10/03/09	GEOD	GD	Clements,	NW3R60000LCD	1	2	31.80	13	29.330
09/20/09	MOH	FT	Clements,	25000CLMHP	7	5	28.20	16	28.082
09/04/09	MOH	FT	Macdonald,	25000CLMHP	7	5	28.40	7	28.474
08/28/09	MOH	FT	Macdonald,	30000CLMHP	9	5	29.60	6	28.663
08/22/09	MOH	GD	Macdonell,	NW12000L6CD	5	6	28.20	8	32.855
08/14/09	MOH	FT	Jamieson,	30000CLMHP	7	2	28.40	7	33.006
08/07/09	MOH	FT	Baillargeon,	25000CLMHP	7	1	28.60		31.793

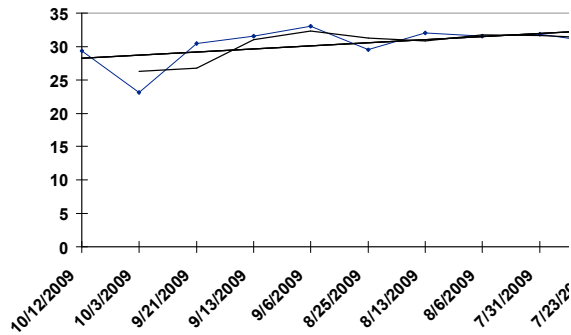


WDB 11/02/09 RACE: 3 1 MILE T

7 FLAMEWALKER

- br 6YO g PP 7 Mayotte, Roger F

Date	Trk	Cond	Driver	Class	PP	Fin	Last Q	Layoff Days	TS
10/12/09	MOH	FT	Mayotte,	QUA	5	2	28.00	9	29.378
10/03/09	MOH	GD	Mayotte,	OP30000CLM	1	9	31.80	12	23.125
09/21/09	MOH	GD	Hudon,	OP45000CLM	8	9	25.60	8	30.422
09/13/09	MOH	FT	Condren,	OP30000CLM	1	3	29.00	7	31.578
09/06/09	MOH	FT	Condren,	OP30000CLM	4	1	28.80	12	33.070
08/25/09	PCD	FT	Napolitano,	OPEN HC	9	8	31.60	12	29.558
08/13/09	M	FT	Miller, Andy	25000CL OP	1	1	28.80	7	32.001
08/06/09	M	FT	Miller, Andy	20000CLHC	8	1	28.80	6	31.540
07/31/09	M	SY	Miller, Andy	25000CL OP	7	2	29.00	8	31.849
07/23/09	M	SY	Miller, Andy	15000CLHC	3	1	30.20		30.636

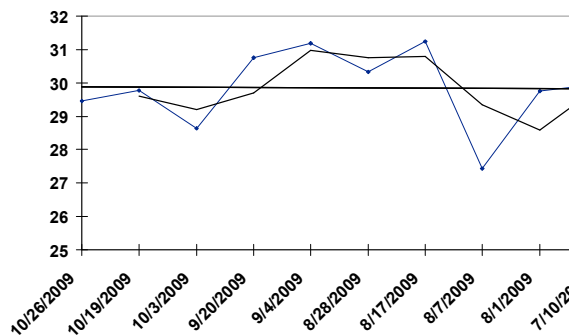


WDB 11/02/09 RACE: 3 1 MILE T

8 POWER SHOT

- b 5YO g PP 8 Filion, Sylvain R

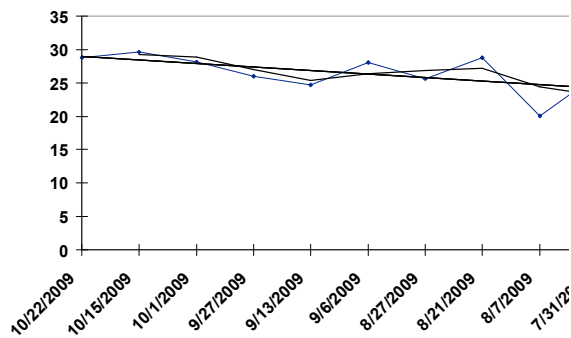
Date	Trk	Cond	Driver	Class	PP	Fin	Last Q	Layoff Days	TS
10/26/09	WDB	FT	Filion,	OP30000CLM	8	7	27.80	7	29.451
10/19/09	WDB	FT	Filion,	24000CLMHP	9	1	28.60	16	29.776
10/03/09	MOH	GD	Filion,	23000CLMHP	9	1	29.40	13	28.632
09/20/09	MOH	FT	Filion,	23000CLMHP	5	1	27.60	16	30.762
09/04/09	MOH	FT	Filion,	20000CLMHP	2	2	28.00	7	31.186
08/28/09	MOH	FT	Filion,	20000CLMHP	5	1	29.40	11	30.326
08/17/09	MOH	FT	Macdonell,	15000CLM	2	3	29.00	10	31.243
08/07/09	MOH	FT	Macdonell,	20000CLMHP	1	5	30.40	6	27.430
08/01/09	MOH	FT	Macdonald,	20000CLMHP	5	5	28.80	22	29.751
07/10/09	MOH	FT	Macdonell,	QUA	1	3	29.00		29.959



WDB 11/02/09 RACE: 4 1 MILE T

1 MAPLES LUCKY BOY - br 4YO g PP 1 Ouellette, Luc R

Date	Trk	Cond	Driver	Class	PP	Fin	Last Q	Layoff Days	TS
10/22/09	SAR	FT	Wallis, Kevin	OP8000CLM	4	7	31.20	7	28.824
10/15/09	SAR	FT	Wallis, Kevin	OP7500CLM	4	1	30.80	14	29.645
10/01/09	SAR	FT	Wallis, Kevin	OP7500CLM	3	1	30.80	4	28.146
09/27/09	FLMD	FT	Bowins, Doug	6000CLM	5	3	31.60	14	25.956
09/13/09	FLMD	FT	Bowins, Doug	6000CLM	9	6	30.40	7	24.672
09/06/09	FLMD	FT	Bowins, Doug	6000CLM	4	3	30.00	10	28.058
08/27/09	SAR	FT	Wall, David W	OP6000CLM	7	6	31.40	6	25.631
08/21/09	SAR	FT		OP6000CLM	0	-7	31.40	14	28.779
08/07/09	GRVR	FT	Rooney,	5000CLM	2	6	32.20	7	20.038
07/31/09	GRVR	FT	Rooney,	5000CLM	1	1	31.60		26.201

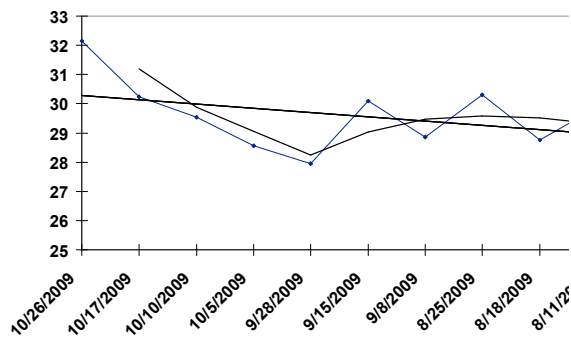




WDB 11/02/09 RACE: 4 1 MILE T

2 ROYAL ACADEMY - b 7YO g PP 2 Jamieson, Jody C

Date	Trk	Cond	Driver	Class	PP	Fin	Last Q	Layoff Days	TS
10/26/09	WDB	FT	Jamieson,	20000CLMHP	5	5	28.00	9	32.154
10/17/09	GEOD	FT	Sinclair,	QUA-T&P	6	4	29.00	7	30.244
10/10/09	WDB	FT	Saftic,	20000CLMHP	1	5	29.40	5	29.538
10/05/09	MOH	FT	Jamieson,	15000CLM	7	1	29.20	7	28.556
09/28/09	MOH	GD	Jamieson,	15000CLM	2	2	31.40	13	27.955
09/15/09	KD	FT	Henriksen,	NW50000LCD	6	5	30.60	7	30.102
09/08/09	KD	FT	Henriksen,	NW50000LCD	4	5	30.20	14	28.864
08/25/09	KD	FT	Henriksen,	NW2750L6CD	5	1	31.00	7	30.298
08/18/09	KD	GD	Henriksen,	NW2750L6CD	1	1	31.80	7	28.746
08/11/09	KD	FT	Henriksen,	NW2750L6CD	6	3	31.00		29.873

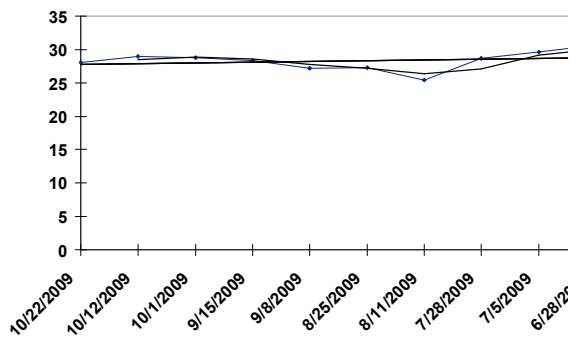


WDB 11/02/09 RACE: 4 1 MILE T

3 ROWDY

- br 4YO g PP 3 Hudon, Phillip

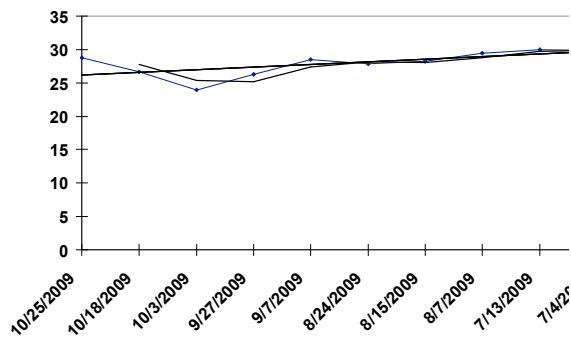
Date	Trk	Cond	Driver	Class	PP	Fin	Last Q	Layoff Days	TS
10/22/09	WDB	FT	Macdonell,	15000CLM	5	10	30.00	10	28.055
10/12/09	WDB	FT	Macdonell,	15000CLM	10	4	29.20	11	28.931
10/01/09	FLMD	FT	Boughton,	OP12000CLM	9	3	30.80	16	28.811
09/15/09	GRVR	FT	Boughton,	15000CLMCD	2	2	29.80	7	28.296
09/08/09	GRVR	FT	Boughton,	15000CLMCD	6	2	29.80	14	27.189
08/25/09	GRVR	FT	Boughton,	15000CLMCD	9	1	30.80	14	27.289
08/11/09	GRVR	FT	Boughton,	15000CLMCD	8	9	33.40	14	25.478
07/28/09	GEOD	GD	Zeron,	12000CLMCD	8	1	31.00	23	28.723
07/05/09	MOH	FT	Zeron,	15000CLM	2	3	31.00	7	29.611
06/28/09	MOH	FT	Zeron,	15000CLM	3	2	29.60		30.623



WDB 11/02/09 RACE: 4 1 MILE T

4 CAVIARS DREAM - b 5YO g PP 4 Condren, Stephen

Date	Trk	Cond	Driver	Class	PP	Fin	Last Q	Layoff Days	TS
10/25/09	WR	FT	Tomlin,	10000CLM	1	1	31.40	7	28.791
10/18/09	WR	FT	Tomlin,	10000CLM	7	2	30.60	15	26.666
10/03/09	RP	FT	Tomlin,	W05000LTHC	5	7	31.20	6	23.983
09/27/09	WR	FT	Tomlin,	10000CLM	7	3	29.80	20	26.249
09/07/09	HP	SY	De Mull, Skip	NW2400L6OC	6	1	30.20	14	28.468
08/24/09	HP	FT	Tomlin,	NW2400L6OC	9	4	29.80	9	27.848
08/15/09	HP	FT	Tomlin,	NW2400L6OC	8	5	30.80	8	28.246
08/07/09	HP	FT	Tomlin,	QUA	6	2	30.00	25	29.402
07/13/09	HP	FT		NW2400L6OC	0	-7	29.80	9	29.943
07/04/09	HP	FT	Tomlin,	NW2400L6OC	2	3	30.20		29.930

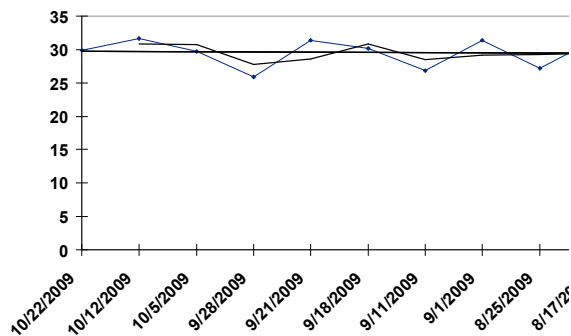


WDB 11/02/09 RACE: 4 1 MILE T

5 AMY ATOM

- br 5YO m PP 5 Brewer, Jason J

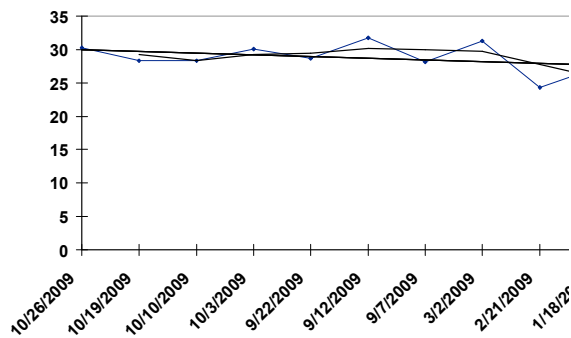
Date	Trk	Cond	Driver	Class	PP	Fin	Last Q	Layoff Days	TS
10/22/09	WDB	FT	Brewer, Jason	15000CLM	4	6	30.00	10	29.926
10/12/09	WDB	FT	Brewer, Jason	15000CLM	5	10	29.40	7	31.703
10/05/09	MOH	FT	Brewer, Jason	15000CLM	6	7	31.20	7	29.706
09/28/09	MOH	GD	Brewer, Jason	15000CLM	9	4	32.60	7	25.875
09/21/09	MOH	FT	Brewer, Jason	QUA	7	2	29.00	3	31.382
09/18/09	FLMD	FT	Mackenzie,	NA250PSCD	2	8	30.40	7	30.207
09/11/09	FLMD	FT	Mackenzie,	NA250PSCD	3	3	30.40	10	26.820
09/01/09	KD	FT	Brown, Gord D	NW2750L6CD	4	4	31.00	7	31.418
08/25/09	KD	FT	Brown, Gord D	NW2750L6CD	8	5	30.80	8	27.161
08/17/09	MOH	FT	Mayotte,	15000CLM	5	6	29.60		31.704



WDB 11/02/09 RACE: 4 1 MILE T

6 CR SKY FLYER - br 6YO g PP 6 Macdonald, Mark J

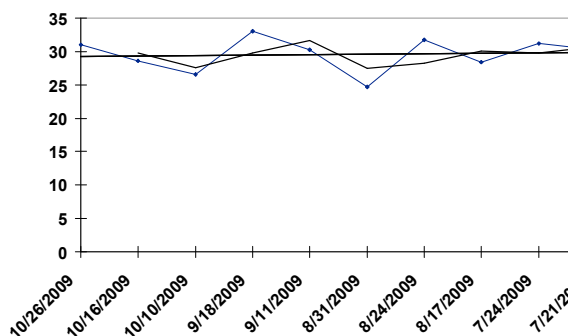
Date	Trk	Cond	Driver	Class	PP	Fin	Last Q	Layoff Days	TS
10/26/09	WDB	FT	Macdonald,	20000CLMHP	6	6	28.00	7	30.295
10/19/09	WDB	FT	Macdonald,	20000CLMHP	2	8	28.80	9	28.274
10/10/09	WDB	FT	Macdonald,	20000CLMHP	2	2	30.00	7	28.312
10/03/09	MOH	GD	Macdonald,	20000CLMHP	4	7	30.00	11	30.117
09/22/09	KD	FT	Mac Isaac,	NW2750L6CD	3	3	30.40	10	28.654
09/12/09	SAR	FT		NW4000L3CD	0	-7	30.60	5	31.778
09/07/09	MOH	FT	Zeron,	QUA	8	2	29.00	189	28.151
03/02/09	WDB	FT		20000CLMHP	0	-7	30.00	9	31.246
02/21/09	WDB	SN	Ouellette,	NW5000L6CD	6	9	32.00	34	24.301
01/18/09	WDB	FT	Jamieson,	NW5000L6CD	2	5	29.20		27.292



WDB 11/02/09 RACE: 4 1 MILE T

7 STRIKING RICH - b 4YO g PP 7 Moiseyev, Jack G

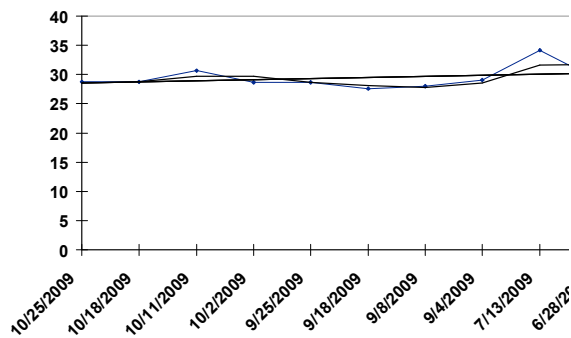
Date	Trk	Cond	Driver	Class	PP	Fin	Last Q	Layoff Days	TS
10/26/09	WDB	FT	Ritchie,	20000CLMHP	4	7	29.00	10	30.971
10/16/09	MOH	FT	Guitard,	QUA	3	3	30.00	6	28.556
10/10/09	WDB	FT	Moiseyev,	20000CLMHP	5	6	33.40	22	26.598
09/18/09	MOH	FT	Ritchie,	NW8000L6CD	4	10	28.60	7	33.044
09/11/09	MOH	FT	Ritchie,	NW8000L6CD	1	7	29.60	11	30.288
08/31/09	MOH	FT	Ritchie,	NW18000L6CD	8	8	32.00	7	24.687
08/24/09	MOH	FT	Ritchie,	OP45000CLM	1	5	28.40	7	31.755
08/17/09	MOH	FT	Moiseyev,	OP45000CLM	8	9	29.00	24	28.423
07/24/09	MOH	FT	Guitard,	QUA	4	2	28.80	3	31.148
07/21/09	GEOD	FT	Guitard,	PREFERRED	3	6	31.00		30.244



WDB 11/02/09 RACE: 4 1 MILE T

8 FOX VALLEY SUMMIT - b 4YO g PP 8 Waples, Randall W

Date	Trk	Cond	Driver	Class	PP	Fin	Last Q	Layoff Days	TS
10/25/09	WR	FT	Sparling,	10000CLM	2	4	31.40	7	28.791
10/18/09	WR	FT	Sparling,	10000CLM	2	1	31.40	7	28.791
10/11/09	WR	FT	Sparling,	OP10000CLM	4	1	29.80	9	30.711
10/02/09	FLMD	SY	Shepherd,	6000CLM	3	1	31.00	7	28.667
09/25/09	FLMD	FT	Shepherd,	6000CLM	6	1	30.20	7	28.628
09/18/09	FLMD	FT	Shepherd,	NA250PSCD	4	5	31.20	10	27.554
09/08/09	GEOD	FT	Shepherd,	7500CLMHP	8	5	29.60	4	27.959
09/04/09	MOH	FT	Macdonald,	QUA	6	4	30.20	53	29.068
07/13/09	MOH	FT	Macdonald,	15000CLM	7	10	27.00	15	34.217
06/28/09	MOH	FT	Moiseyev,	15000CLM	2	5	30.60		29.213

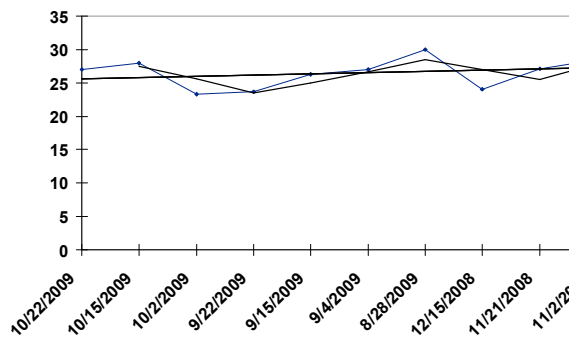


WDB 11/02/09 RACE: 4 1 MILE T

9 REGAL VISITOR

- b 9YO h PP 9 Mayotte, Roger F

Date	Trk	Cond	Driver	Class	PP	Fin	Last Q	Layoff Days	TS
10/22/09	SAR	FT	Cullen, Allan	NW2000L3CD	5	2	30.80	7	27.008
10/15/09	SAR	FT	Arnott, Shawn	NW1500L3CD	6	7	30.40	13	27.952
10/02/09	LON	GD	Arnott, Shawn	6000CLM	6	5	32.20	10	23.278
09/22/09	GRVR	FT	Davies, Paul	NA500PSCD	6	9	30.80	7	23.679
09/15/09	GRVR	FT	Henry, Trevor	NA500PSCD	4	4	32.00	11	26.302
09/04/09	MOH	FT	Saftic,	NW5000L6CD	4	9	29.80	7	26.982
08/28/09	MOH	FT	Saftic,	QUA	3	6	29.40	256	29.959
12/15/08	LON	SY	Forward, Brad	NW5000L3CD	2	5	34.60	24	24.011
11/21/08	WDB	FT	Saftic,	15000CLM	6	9	29.80	19	27.104
11/02/08	WDB	FT	Brewer, Jason	15000CLM	1	6	30.00		28.543

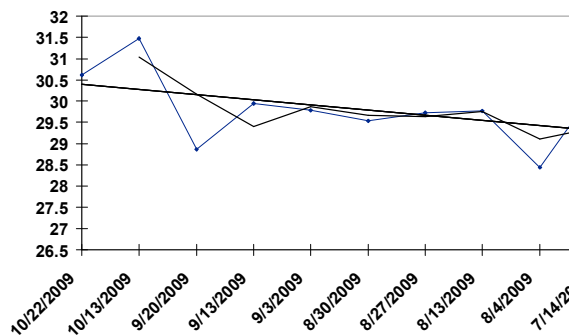




WDB 11/02/09 RACE: 4 1 MILE T

10 PRETTY KADABRA - b 4YO m PP 10 Baillargeon, Mario J

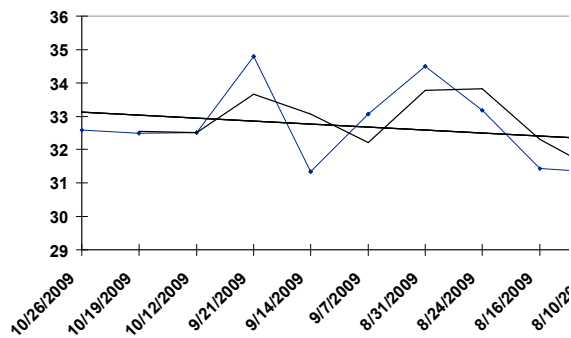
Date	Trk	Cond	Driver	Class	PP	Fin	Last Q	Layoff Days	TS
10/22/09	WDB	FT	Jamieson,	15000CLM	10	3	30.60	9	30.608
10/13/09	GEOD	FT	Jamieson,	12000CLMCD	6	1	30.00	23	31.477
09/20/09	RIDC	FT	Macdonald,	NW3R50000LCD	1	3	32.00	7	28.860
09/13/09	RIDC	FT	Macdonald,	NW3R50000LCD	1	1	30.80	10	29.944
09/03/09	RIDC	FT	Macdonald,	NW2R30000LCD	4	1	30.20	4	29.789
08/30/09	RIDC	FT		NW3R50000LCD	0	-7	30.40	3	29.537
08/27/09	RIDC	FT	Macdonald,	NW2R30000LCD	5	1	30.40	14	29.731
08/13/09	RIDC	FT	Macdonald,	NW2R30000LCD	2	1	30.60	9	29.769
08/04/09	GEOD	FT	Etsell, Mark	12000CLMCD	7	5	30.80	21	28.442
07/14/09	GEOD	FT		12000CLMCD	0	-7	30.40		30.322



WDB 11/02/09 RACE: 5 1 MILE P

1 PRESIDENTIALDESIRE - b 3YO c PP 1 Condren, Stephen

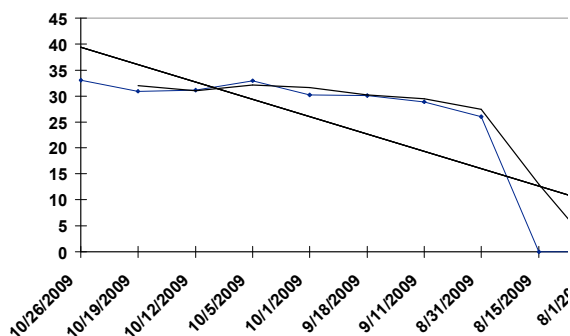
Date	Trk	Cond	Driver	Class	PP	Fin	Last Q	Layoff Days	TS
10/26/09	WDB	FT	Jamieson,	NW2R30000LCD	5	3	26.40	7	32.582
10/19/09	WDB	FT	Jamieson,	NW2R30000LCD	1	3	28.00	7	32.498
10/12/09	WDB	FT	Jamieson,	NW2R32000LCD	4	3	27.60	21	32.516
09/21/09	MOH	FT		NW2R31000LCD	0	-7	28.60	7	34.802
09/14/09	MOH	FT	Jamieson,	NW2R30000LCD	4	6	27.20	7	31.344
09/07/09	MOH	FT	Jamieson,	NW2R17000LCD	1	1	27.80	7	33.063
08/31/09	MOH	FT	Jamieson,	NW2R17500LCD	8	2	27.00	7	34.495
08/24/09	MOH	FT	Jamieson,	NW1R7500LCD	8	1	28.60	8	33.171
08/16/09	MOH	FT	Waples,	NW1R7500LCD	8	2	27.60	6	31.432
08/10/09	MOH	FT	Brewer, Jason	NW1R7500LCD	2	3	27.80		31.312



WDB 11/02/09 RACE: 5 1 MILE P

2 HELLSAPOPPIN - bl 3YO g PP 2 Zeron, Richard

Date	Trk	Cond	Driver	Class	PP	Fin	Last Q	Layoff Days	TS
10/26/09	WDB	FT	Zeron,	NW2R30000LCD	2	4	28.80	7	33.098
10/19/09	WDB	FT	Zeron,	NW2R17000LCD	3	4	27.80	7	30.952
10/12/09	WDB	FT	Zeron,	NW2R15500LCD	3	5	28.40	7	31.159
10/05/09	MOH	FT	Filion,	NW2R15000LCD	3	2	28.80	4	32.943
10/01/09	GRVR	FT	Henry, Trevor	ON-NW20000L	6	8	26.60	13	30.236
09/18/09	GRVR	FT	Zeron, Scott	ON-NW20000L	3	2	30.00	7	30.057
09/11/09	GRVR	FT	Henry, Trevor	ON-NW15500L	6	3	29.80	11	28.887
08/31/09	GRVR	FT	Plante, Jean	NW20000LCD	9	8	32.20	16	26.025
08/15/09	WODS	FT	Henry, Trevor	NW10000LCD	1	1	30.40	14	
08/01/09	WODS	FT	Henry, Trevor	NW5000LCD	4	1	30.60		

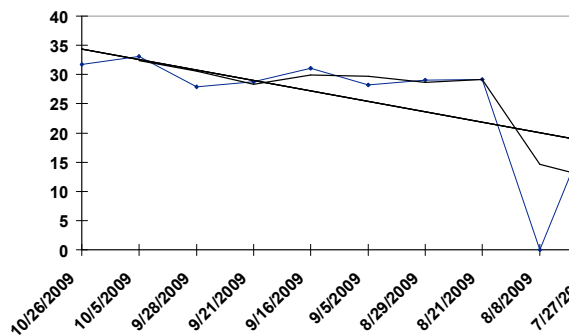


WDB 11/02/09 RACE: 5 1 MILE P

3 THE BARBER

- b 4YO g PP 3 Drury, Jonathan L

Date	Trk	Cond	Driver	Class	PP	Fin	Last Q	Layoff Days	TS
10/26/09	WDB	FT	Drury,	NW2R3000LCD	7	3	28.20	21	31.734
10/05/09	MOH	FT		NW2R15000LCD	0	-7	28.80	7	33.082
09/28/09	MOH	GD	Drury,	NW2R15000LCD	3	3	30.20	7	27.949
09/21/09	MOH	GD	Drury,	NW2R15000LCD	7	7	29.40	5	28.701
09/16/09	FLMD	FT	Drury,	NW2R18750L	5	1	28.40	11	31.130
09/05/09	FLMD	FT	Drury,	8000CLMCD	8	3	30.40	7	28.196
08/29/09	FLMD	FT	Drury,	NW2R15000L	3	5	31.20	8	29.073
08/21/09	GEOD	FT	Belanger,	8000CLMCD	7	8	31.40	13	29.212
08/08/09	WODS	SY	Drury,	NW10000LCD	2	3	31.80	12	
07/27/09	GRVR	FT	Drury,	NW20000LCD	2	7	33.80		24.126

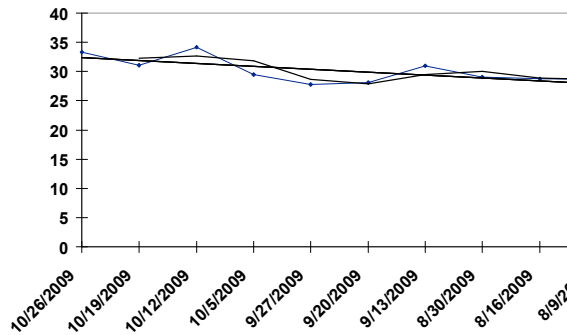


WDB 11/02/09 RACE: 5 1 MILE P

4 MCARTLEE

- b 3YO c PP 4 Macdonald, Mark J

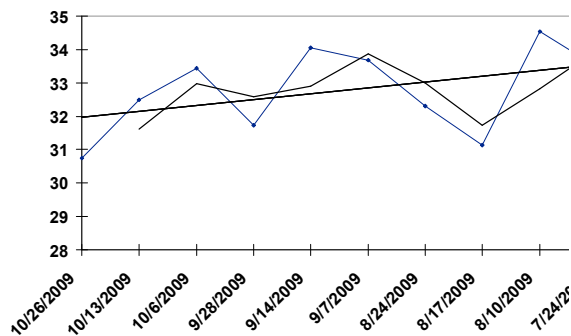
Date	Trk	Cond	Driver	Class	PP	Fin	Last Q	Layoff Days	TS
10/26/09	WDB	FT	Macdonald,	NW2R30000LCD	5	2	28.20	7	33.342
10/19/09	WDB	FT	Macdonald,	NW2R30000LCD	4	9	28.60	7	31.109
10/12/09	WDB	FT	Macdonald,	NW2R15500LCD	3	1	27.20	7	34.200
10/05/09	MOH	FT	Macdonald,	NW2R15000LCD	5	3	27.60	8	29.517
09/27/09	RIDC	SY	Coville,	NW2R30000L	5	8	29.80	7	27.763
09/20/09	RIDC	FT	Coville,	NW2R30000L	8	8	29.60	7	28.072
09/13/09	RIDC	FT	Coville,	NW15000L	7	3	30.00	14	30.976
08/30/09	RIDC	FT	Coville,	NW15000L	2	1	31.20	14	29.053
08/16/09	RIDC	FT	Coville,	NW15100L	2	7	31.60	7	28.750
08/09/09	RIDC	FT	Coville,	NW15000L	5	2	30.80		28.595



WDB 11/02/09 RACE: 5 1 MILE P

5 VOLATILITY FACTOR - b 3YO g PP 5 Filion, Sylvain R

Date	Trk	Cond	Driver	Class	PP	Fin	Last Q	Layoff Days	TS
10/26/09	WDB	FT	Zeron,	NW2R30000LCD	6	7	27.20	13	30.740
10/13/09	KD	FT	Tackoor, Des	NW2R30000L	2	2	29.00	7	32.492
10/06/09	KD	FT	Tackoor, Des	NW2R33000L	1	3	29.60	8	33.449
09/28/09	MOH	GD	Saftic,	NW2R31000LCD	1	10	28.20	14	31.729
09/14/09	MOH	FT	Saftic,	NW2R30000LCD	3	7	27.00	7	34.059
09/07/09	MOH	FT	Saftic,	NW2R30000LCD	3	4	28.80	14	33.676
08/24/09	MOH	FT	Saftic,	NW2R30000LCD	4	3	29.20	7	32.311
08/17/09	MOH	FT	Saftic,	NW2R32000LCD	9	5	27.40	7	31.141
08/10/09	MOH	FT	Saftic,	NW2R15000LCD	2	1	28.00	17	34.530
07/24/09	INDY	FT	Evers, Mark E	NW2-B-DIV	9	1	31.00		33.483

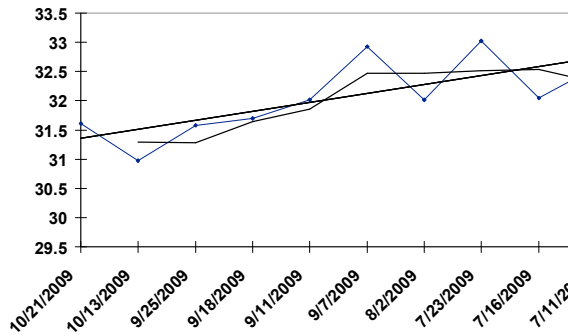


WDB 11/02/09 RACE: 5 1 MILE P

6 SHARK SHOOTER

- b 3YO g PP 6 Jamieson, Jody C

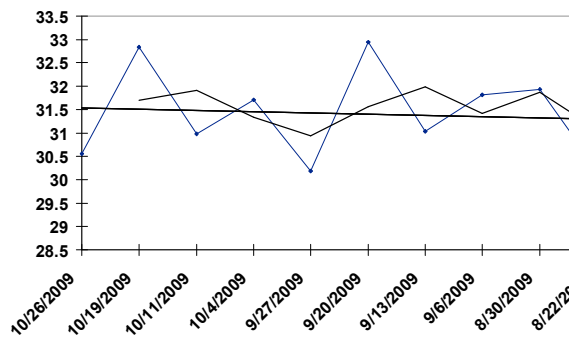
Date	Trk	Cond	Driver	Class	PP	Fin	Last Q	Layoff Days	TS
10/21/09	FLMD	FT	Jamieson,	NW2R15500LCD	5	1	29.60	8	31.608
10/13/09	GEOD	FT	Langdon,	NW2R25000L	2	9	31.60	18	30.975
09/25/09	GEOD	FT	Langdon,	NW1R10000L	7	1	29.60	7	31.582
09/18/09	GEOD	FT	Langdon,	NW1R10000L	9	1	29.20	7	31.699
09/11/09	GEOD	FT	Langdon,	NW1R10000L	2	1	30.40	4	32.013
09/07/09	MOH	FT	Ouellette,	QUA	2	2	27.20	36	32.930
08/02/09	RP	FT		NW1250L5CD	0	-7	30.60	10	32.018
07/23/09	SAR	FT		6000CLMCD	0	-7	30.00	7	33.018
07/16/09	SAR	FT	Mc Ilmurray,	6000CLMCD	5	2	30.40	5	32.049
07/11/09	HP	FT		NW4PMRCLCD	0	-7	28.80		32.581



WDB 11/02/09 RACE: 5 1 MILE P

7 CASIMIR INYURFACE - b 3YO c PP 7 Baillargeon, Mario J

Date	Trk	Cond	Driver	Class	PP	Fin	Last Q	Layoff Days	TS
10/26/09	GRVR	FT	Allard, Simon	ON-GR-STRTRS	2	2	30.20	7	30.553
10/19/09	WDB	FT	Baillargeon,	NW2R3000LCD	7	5	28.00	8	32.842
10/11/09	WDB	FT	Baillargeon,	ON-GR-STRTRS	6	5	27.80	7	30.984
10/04/09	MOH	GD	Baillargeon,	NW7500L6CD	4	3	28.80	7	31.704
09/27/09	MOH	FT	Saftic,	NW7500L6CD	7	3	29.00	7	30.187
09/20/09	MOH	FT	Saftic,	ON-GR-STRTRS	5	4	27.20	7	32.937
09/13/09	MOH	FT	Saftic,	ON-3YR-COND	2	4	29.80	7	31.034
09/06/09	MOH	FT	Saftic,	ON-3YR-COND	2	8	28.20	7	31.811
08/30/09	MOH	FT	Saftic,	ON-3YR-COND	3	5	29.00	8	31.938
08/22/09	KD	GD	Brewer, Jason	ONSS-RS	5	6	30.00		30.213



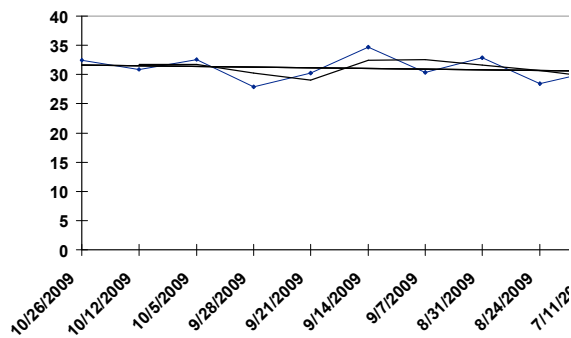


WDB 11/02/09 RACE: 5 1 MILE P

8 IDEAL GIFT

- b 3YO c PP 8 Ouellette, Luc R

Date	Trk	Cond	Driver	Class	PP	Fin	Last Q	Layoff Days	TS
10/26/09	WDB	FT	Filion,	NW2R30000LCD	3	6	27.00	14	32.501
10/12/09	WDB	FT	Filion,	NW2R32000LCD	7	7	27.40	7	30.883
10/05/09	MOH	FT	Jamieson,	NW2R32000LCD	1	5	29.60	7	32.570
09/28/09	MOH	GD	Moiseyev,	NW2R31000LCD	6	5	30.40	7	27.854
09/21/09	MOH	FT	Macdonell,	NW2R31000LCD	4	5	28.80	7	30.256
09/14/09	MOH	FT	Miller, David	NW2R30000LCD	2	2	27.00	7	34.716
09/07/09	MOH	FT	Macdonald,	NW2R30000LCD	10	5	28.20	7	30.364
08/31/09	MOH	FT	Ouellette,	NW2R17500LCD	5	4	27.40	7	32.893
08/24/09	GRVR	FT	Campbell,	NW20000LCD	6	7	30.00	44	28.403
07/11/09	MOH	FT	Campbell,	SUMMERTIME	1	8	29.60		30.655

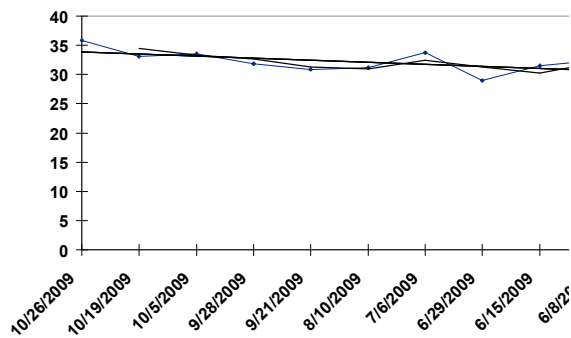


WDB 11/02/09 RACE: 5 1 MILE P

9 SILVER KRIS

- ro 3YO g PP 9 Hudon, Joseph P Jr

Date	Trk	Cond	Driver	Class	PP	Fin	Last Q	Layoff Days	TS
10/26/09	WDB	FT	Hudon, Joseph	NW2R3000LCD	4	2	26.60	7	35.848
10/19/09	WDB	FT	Hudon, Joseph	NW2R3000LCD	6	4	28.20	14	33.098
10/05/09	MOH	FT	Hudon, Joseph	NW2R1500LCD	8	1	28.60	7	33.544
09/28/09	MOH	GD	Hudon, Joseph	NW2R1500LCD	3	2	29.60	7	31.868
09/21/09	MOH	GD	Hudon, Joseph	NW2R1500LCD	3	4	28.00	42	30.825
08/10/09	MOH	FT	Hudon, Joseph	NW2R1500LCD	7	7	26.80	35	31.189
07/06/09	MOH	FT		NW2R1600LCD	0	-7	28.20	7	33.702
06/29/09	MOH	GD	Hudon, Joseph	NW2R1500LCD	7	6	29.40	14	28.929
06/15/09	MOH	FT	Hudon, Joseph	NW2R1500LCD	5	3	28.20	7	31.508
06/08/09	MOH	FT	Hudon, Joseph	NW2R1600LCD	5	5	28.00		32.501

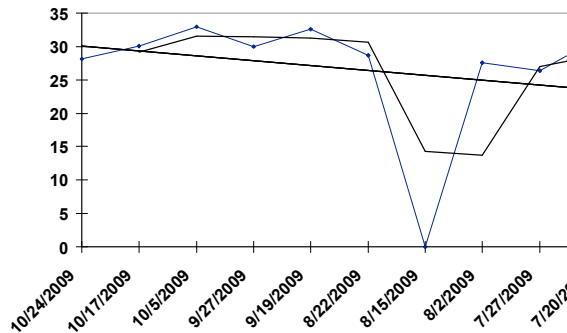


WDB 11/02/09 RACE: 5 1 MILE P

10 LITTLE MAN

- b 3YO g PP 10 Brewer, Jason J

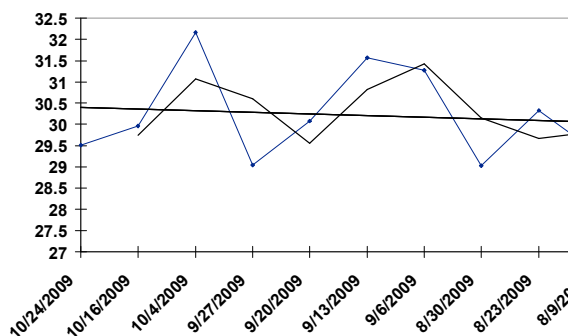
Date	Trk	Cond	Driver	Class	PP	Fin	Last Q	Layoff Days	TS
10/24/09	SAR	FT	Williams,	NW25000LCD	8	4	30.80	7	28.146
10/17/09	LON	FT	Henry, Trevor	ONSS-RS	4	5	29.80	12	30.120
10/05/09	MOH	FT	Jamieson,	NW2R15000LCD	2	1	28.80	8	32.943
09/27/09	WR	FT	Williams,	ONSS-RS	7	8	30.40	8	30.011
09/19/09	SAR	FT	Williams,	NW12000LCD	3	2	28.60	28	32.573
08/22/09	FLMD	SL	Bowins, Doug	NW2R15000L	2	5	30.40	7	28.667
08/15/09	WODS	FT	Sparling,	NW10000LCD	4	3	29.20	13	
08/02/09	CLNT	FT	Sowerby,	ONSS-RS	4	7	30.20	6	27.567
07/27/09	MOH	GD	Condren,	ON-3YR-COND	10	9	30.20	7	26.375
07/20/09	MOH	FT	Jamieson,	ON-3YR-COND	8	9	27.40		31.091



WDB 11/02/09 RACE: 6 1 MILE T

1 MAGIC FRUIT - b 2YO c PP 1 Henriksen, Per

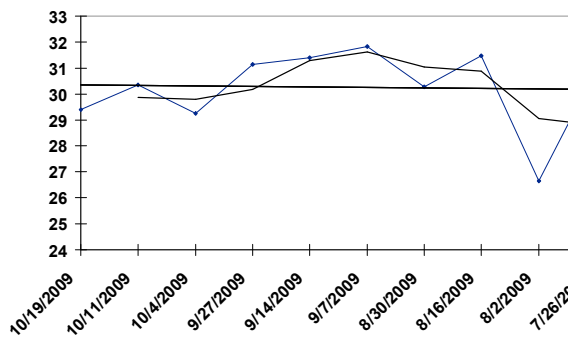
Date	Trk	Cond	Driver	Class	PP	Fin	Last Q	Layoff Days	TS
10/24/09	WDB	FT	Condren,	D-BRDRSCROWN	7	3	30.80	8	29.513
10/16/09	WDB	FT	Condren,	BRDRS CROWN	3	4	28.60	12	29.964
10/04/09	RIDC	FT	Henriksen,	ONSS-GF	3	1	28.60	7	32.163
09/27/09	RIDC	SY	Henriksen,	ONSS-GE	5	1	29.40	7	29.040
09/20/09	MOH	FT	Campbell,	D-WMWELLWOOD	9	5	28.40	7	30.079
09/13/09	MOH	FT	Henriksen,	WM WELLWOOD	4	3	29.00	7	31.565
09/06/09	MOH	FT	Henriksen,	CHAMPLAIN	9	4	27.60	7	31.268
08/30/09	MOH	FT	Henriksen,	2YR-COND	7	3	30.00	7	29.024
08/23/09	MOH	FT	Ritchie,	ONSS-GE	9	5	29.20	14	30.326
08/09/09	FLMD	FT	Ritchie,	ONSS-GE	6	7	29.40		29.342



WDB 11/02/09 RACE: 6 1 MILE T

2 RED ZEPPELIN - ch 4YO g PP 2 Condren, Stephen

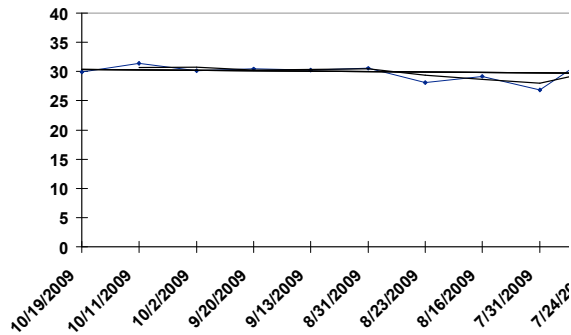
Date	Trk	Cond	Driver	Class	PP	Fin	Last Q	Layoff Days	TS
10/19/09	WDB	FT	Condren,	NW3R60000LCD	4	5	30.60	8	29.401
10/11/09	WDB	FT	Condren,	NW3R60000LCD	5	4	29.20	7	30.352
10/04/09	MOH	GD	Saftic,	NW3R60000LCD	3	6	30.40	7	29.245
09/27/09	MOH	FT	Oliver, Keith	NW3R60000LCD	4	2	28.00	13	31.141
09/14/09	MOH	FT	Condren,	NW3R60000LCD	4	2	28.60	7	31.401
09/07/09	MOH	FT	Filion,	NW3R60000LCD	5	7	30.00	8	31.837
08/30/09	MOH	FT	Waples,	NW3R60500LCD	9	5	28.80	14	30.269
08/16/09	MOH	FT	Condren,	NW3R61000LCD	9	5	29.00	14	31.476
08/02/09	MOH	FT	Mayotte,	NW3R60000LCD	9	9	29.00	7	26.640
07/26/09	MOH	GD	Mayotte,	NW3R65000LCD	6	4	30.20		30.939



WDB 11/02/09 RACE: 6 1 MILE T

3 WORLD STAGE - b 4YO g PP 3 Jamieson, Jody C

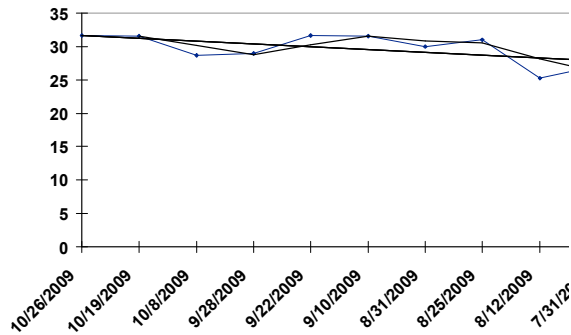
Date	Trk	Cond	Driver	Class	PP	Fin	Last Q	Layoff Days	TS
10/19/09	WDB	FT	Ritchie,	NW3R60000LCD	2	2	28.40	8	29.901
10/11/09	WDB	FT	Jamieson,	NW3R60000LCD	3	1	29.00	9	31.365
10/02/09	MOH	GD		NW8000L6CD	0	-7	31.20	12	30.149
09/20/09	MOH	FT	Ritchie,	NW2R37500LCD	4	7	30.00	7	30.427
09/13/09	MOH	FT	Ritchie,	NW2R35000LCD	4	3	29.20	13	30.275
08/31/09	MOH	FT	Ritchie,	NW2R35000LCD	1	8	27.80	8	30.579
08/23/09	MOH	FT	Ritchie,	NW2R35000LCD	9	3	28.20	7	28.145
08/16/09	MOH	FT	Ritchie,	NW2R35000LCD	1	9	27.60	16	29.194
07/31/09	MOH	FT	Ritchie,	QUA	3	4	29.40	7	26.868
07/24/09	MOH	FT	Saftic,	QUA	7	7	25.40		33.394



WDB 11/02/09 RACE: 6 1 MILE T

4 GOOD FRIEND - b 3YO g PP 4 Fillion, Sylvain R

Date	Trk	Cond	Driver	Class	PP	Fin	Last Q	Layoff Days	TS
10/26/09	WDB	FT	Fillion,	NW3R60000LCD	7	2	28.20	7	31.634
10/19/09	WDB	FT	Fillion,	NW3R60000LCD	9	3	29.60	11	31.584
10/08/09	FLMD	FT	Allard, Simon	ONSS-RS	1	3	30.60	10	28.720
09/28/09	MOH	GD	Jamieson,	ON-GR-STRTRS	6	1	31.00	6	28.922
09/22/09	GEOD	FT	Jamieson,	ONSS-RS	1	2	29.60	12	31.628
09/10/09	MOH	FT	Jamieson,	NW2R15000LCD	10	1	28.20	10	31.584
08/31/09	MOH	FT	Byron, Aaron	NW2R35000LCD	1	5	28.40	6	29.991
08/25/09	GEOD	FT	Allard, Simon	NW2R25000LCD	4	2	28.40	13	31.014
08/12/09	SUDB	FT	Maclean, Paul	ONSS-RS	4	6	30.20	12	25.225
07/31/09	FLMD	FT	Byron, Aaron	QUA	3	1	31.40		27.109

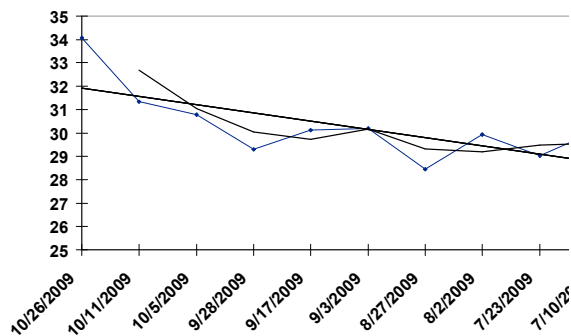


WDB 11/02/09 RACE: 6 1 MILE T

5 J M IRONSIDE

- br 4YO g PP 5 Ouellette, Luc R

Date	Trk	Cond	Driver	Class	PP	Fin	Last Q	Layoff Days	TS
10/26/09	WDB	FT	Brown, Doug S	NW3R6000LCD	4	-8	27.80	15	34.062
10/11/09	WDB	FT	Brown, Doug S	NW2R3500LCD	9	1	30.00	6	31.334
10/05/09	MOH	FT	Brown, Doug S	NW2R1600LCD	4	1	30.20	7	30.775
09/28/09	MOH	GD	Brown, Doug S	NW2R1500LCD	8	2	30.60	11	29.308
09/17/09	MOH	FT	Brown, Doug S	NW2R1500LCD	5	3	29.80	14	30.124
09/03/09	MOH	FT	Brown, Doug S	NW2R1500LCD	7	6	29.60	7	30.212
08/27/09	MOH	FT	Brown, Doug S	NW2R1500LCD	4	9	34.40	25	28.461
08/02/09	MOH	FT	Byron, Aaron	NW2R3500LCD	3	8	28.80	10	29.934
07/23/09	MOH	FT	Ouellette,	NW2R1500LCD	4	4	30.00	13	29.024
07/10/09	MOH	FT	Filion,	QUA	2	2	29.00		30.098

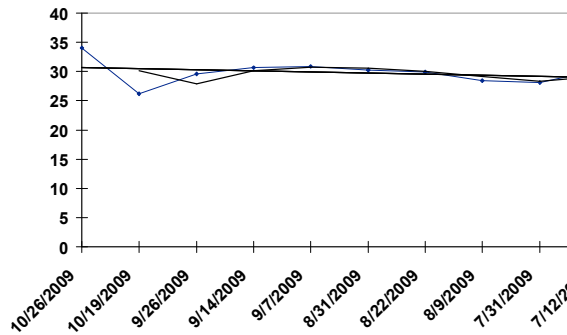




WDB 11/02/09 RACE: 6 1 MILE T

6 KASH N CREDIT - b 3YO c PP 6 Waples, Randall W

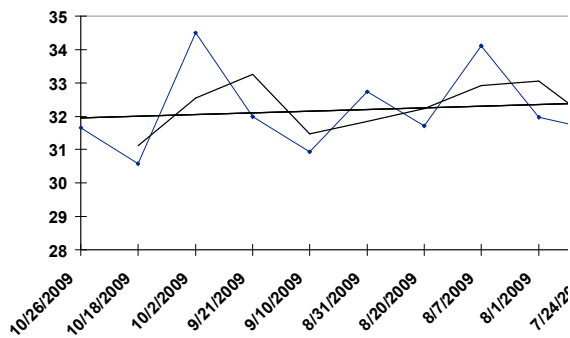
Date	Trk	Cond	Driver	Class	PP	Fin	Last Q	Layoff Days	TS
10/26/09	WDB	FT	Galbraith,	NW3R60000LCD	3	8	27.80	7	34.062
10/19/09	WDB	FT	Waples,	NW3R60000LCD	6	9	30.60	23	26.203
09/26/09	VD	FT	Bartlett,	NYSS	7	8	30.80	12	29.634
09/14/09	YR	FT	Bartlett,	NYSS	2	1	30.00	7	30.664
09/07/09	YR	FT	Bartlett,	NYSS	1	2	29.20	7	30.898
08/31/09	MOH	FT	Jamieson,	NW2R35000LCD	9	4	28.20	9	30.187
08/22/09	STGA	SY	Galbraith,	NYSS	2	3	29.80	13	29.876
08/09/09	TGDN	FT	Morrill,	NYSF	5	4	29.60	9	28.415
07/31/09	BTVA	FT	Galbraith,	NYSS	7	4	29.60	19	28.158
07/12/09	MOH	FT	Jamieson,	NW1R8000LCD	8	1	29.20		30.237



WDB 11/02/09 RACE: 6 1 MILE T

7 MARGARITA MARY - b 3YO f PP 7 Zeron, Richard

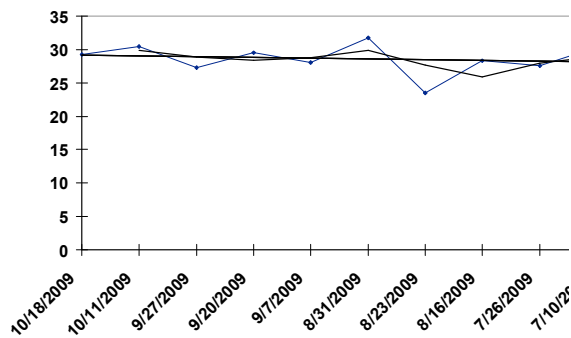
Date	Trk	Cond	Driver	Class	PP	Fin	Last Q	Layoff Days	TS
10/26/09	WDB	FT	Zeron,	NW3R60000LCD	6	1	28.60	8	31.659
10/18/09	WDB	FT	Zeron,	NW2R35000LCD	5	1	29.20	16	30.583
10/02/09	LEX	FT	Zeron,	KYFUT F EL	6	4	27.80	11	34.503
09/21/09	MOH	GD	Zeron,	NW3R60000LCD	4	2	29.20	11	31.995
09/10/09	MOH	FT	Zeron,	SIMCOE	1	4	29.40	10	30.933
08/31/09	MOH	FT	Zeron,	NW2R35000LCD	2	1	28.00	11	32.741
08/20/09	MOH	GD	Zeron,	NW2R15000LCD	6	1	28.80	13	31.717
08/07/09	M	FT	Tetrick, Tim	DUENNA	1	8	27.60	6	34.113
08/01/09	M	FT	Tetrick, Tim	HAMBOOAKS	7	4	29.60	8	31.976
07/24/09	M	FT	Brennan,	3YRF CD	5	1	29.00		31.578



WDB 11/02/09 RACE: 6 1 MILE T

8 STORMONT LANCELOT - b 3YO g PP 8 Drury, Jonathan L

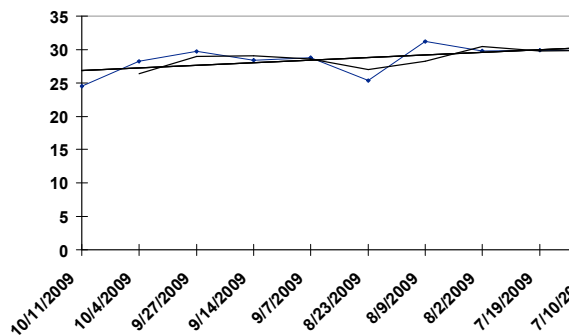
Date	Trk	Cond	Driver	Class	PP	Fin	Last Q	Layoff Days	TS
10/18/09	WDB	FT	Drury,	NW2R35000LCD	6	8	29.60	7	29.207
10/11/09	WDB	FT	Drury,	NW2R35000LCD	3	3	30.20	14	30.496
09/27/09	MOH	FT	Drury,	NW2R35000LCD	8	6	29.80	7	27.253
09/20/09	MOH	FT	Drury,	NW2R37500LCD	7	3	28.40	13	29.555
09/07/09	MOH	FT	Drury,	NW2R35000LCD	3	6	32.60	7	28.075
08/31/09	MOH	FT	Drury,	NW2R35000LCD	6	1	29.00	8	31.793
08/23/09	RIDC	FT	Armstrong,	NW3R50000LCD	3	6	32.40	7	23.466
08/16/09	MOH	FT	Drury,	NW2R35000LCD	6	3	28.20	21	28.334
07/26/09	MOH	FT	Macdonald,	NW2R35000LCD	10	8	33.00	16	27.607
07/10/09	MOH	FT	Drury,	NW2R35000LCD	9	3	29.40		30.339



WDB 11/02/09 RACE: 6 1 MILE T

9 SOUTHWIND CRUISER - b 5YO g PP 9 Weber, Shane G

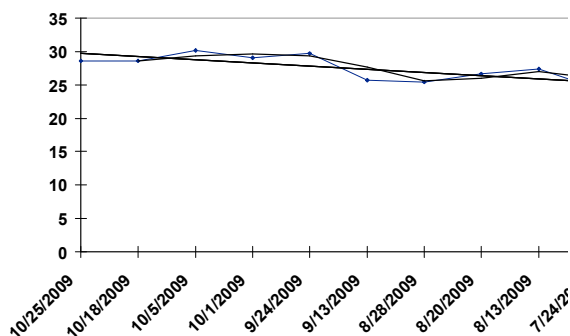
Date	Trk	Cond	Driver	Class	PP	Fin	Last Q	Layoff Days	TS
10/11/09	WDB	FT	Waples,	NW3R60000LCD	1	7	31.80	7	24.552
10/04/09	MOH	GD	Weber, Shane	NW3R60000LCD	6	1	28.60	7	28.202
09/27/09	MOH	FT	Weber, Shane	NW3R60000LCD	3	3	28.60	13	29.694
09/14/09	MOH	FT	Weber, Shane	NW3R60000LCD	8	6	28.80	7	28.423
09/07/09	MOH	FT	Weber, Shane	NW2R35000LCD	1	3	29.00	15	28.758
08/23/09	MOH	FT	Weber, Shane	NW2R35000LCD	5	10	34.00	14	25.332
08/09/09	MOH	FT	Weber, Shane	NW2R35000LCD	3	3	28.00	7	31.167
08/02/09	MOH	FT	Weber, Shane	NW2R35000LCD	8	1	28.40	14	29.795
07/19/09	MOH	FT	Weber, Shane	NW2R35000LCD	7	2	28.80	9	29.883
07/10/09	MOH	FT	Weber, Shane	NW2R35000LCD	5	4	28.40		29.934



WDB 11/02/09 RACE: 6 1 MILE T

10 AUREVOIR GLADIATOR - br 3YO c PP 10 Brewer, Jason J

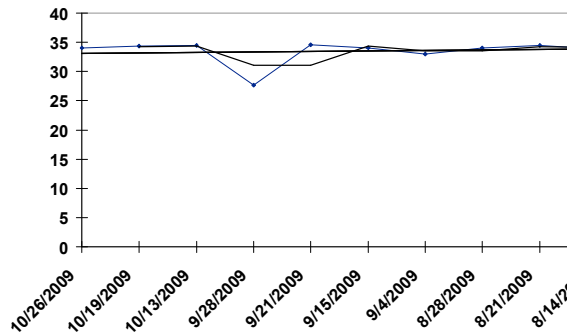
Date	Trk	Cond	Driver	Class	PP	Fin	Last Q	Layoff Days	TS
10/25/09	WDB	FT	Filion,	NW2R1500LCD	4	1	29.20	7	28.618
10/18/09	WDB	FT	Filion,	NW2R1500LCD	3	2	29.60	13	28.562
10/05/09	MOH	FT	Filion,	NW2R1600LCD	7	2	29.80	4	30.143
10/01/09	MOH	FT	Filion,	NW2R1500LCD	3	2	29.60	7	29.055
09/24/09	MOH	FT	Filion,	NW1R800LCD	1	1	28.80	11	29.662
09/13/09	MOH	FT	Zeron,	NW1R800LCD	10	7	31.00	16	25.743
08/28/09	RIDC	FT	Pouliot,	NW1R750LCD	9	9	31.20	8	25.434
08/20/09	MOH	GD	Ouellette,	NW1R800LCD	10	7	31.20	7	26.621
08/13/09	MOH	FT	Jamieson,	NW1R800LCD	5	4	30.20	20	27.418
07/24/09	RIDC	GD	Lanoie, Marco	NW1R750LCD	5	6	32.80		24.517



WDB 11/02/09 RACE: 7 1 MILE P

1 WILDCAT ART - b 5YO g PP 1 Moiseyev, Jack G

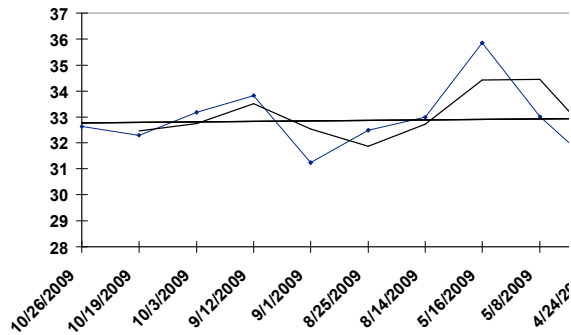
Date	Trk	Cond	Driver	Class	PP	Fin	Last Q	Layoff Days	TS
10/26/09	WDB	FT	Moiseyev,	NW4R100000L	1	3	27.60	7	34.099
10/19/09	WDB	FT	Saftic,	NW4R100000L	5	4	28.00	6	34.381
10/13/09	GEOD	FT	Coulter,	NW5R80000LCD	2	1	28.80	15	34.435
09/28/09	MOH	GD	Moiseyev,	NW4R116000L	9	10	30.40	7	27.645
09/21/09	MOH	GD	Moiseyev,	NW3R53000LCD	6	1	26.80	6	34.596
09/15/09	GEOD	FT	Byron,	NW4R70000LCD	7	6	27.60	11	34.062
09/04/09	GEOD	FT	Rae, Bradley	NW3R50000LCD	1	1	29.00	7	32.972
08/28/09	GEOD	FT	Rae, Bradley	NW3R50000LCD	1	1	28.60	7	34.108
08/21/09	GEOD	FT	Byron,	NW3R50000LCD	8	1	29.00	7	34.480
08/14/09	GEOD	FT	Byron,	NW3R50000LCD	3	3	28.00		33.840



WDB 11/02/09 RACE: 7 1 MILE P

2 ITS A GOOD THING - b 3YO c PP 2 Waples, Randall W

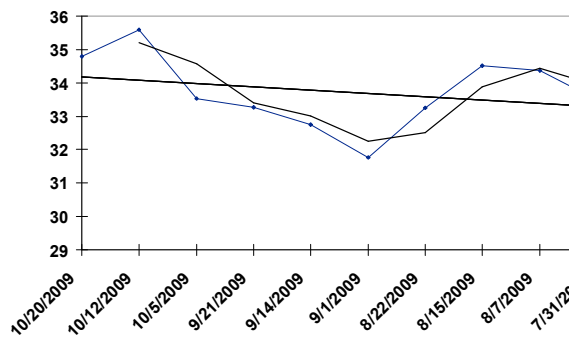
Date	Trk	Cond	Driver	Class	PP	Fin	Last Q	Layoff Days	TS
10/26/09	WDB	FT	Waples,	NW4R100000L	2	4	27.80	7	32.642
10/19/09	WDB	FT	Waples,	NW4R100000L	6	5	27.40	16	32.304
10/03/09	MOH	GD	Waples,	ONSS-GE	2	6	28.80	21	33.177
09/12/09	MOH	FT	Waples,	D-SIMCOE	7	7	28.20	11	33.834
09/01/09	GRVR	FT	Waples,	ONSS-GF	3	4	30.20	7	31.252
08/25/09	GRVR	FT	Waples,	ONSS-GE	5	3	27.80	11	32.478
08/14/09	MOH	FT	Waples,	QUA	1	4	27.20	90	32.994
05/16/09	GEOD	FT		UPPER CANADA	0	-7	29.00	8	35.858
05/08/09	MOH	FT	Waples,	ON-SPRING	2	2	27.20	14	33.025
04/24/09	WDB	FT	Waples,	ON-SPRING	4	5	26.20		31.043



WDB 11/02/09 RACE: 7 1 MILE P

3 AMAZON ART - b 3YO g PP 3 Macdonald, Mark J

Date	Trk	Cond	Driver	Class	PP	Fin	Last Q	Layoff Days	TS
10/20/09	GEOD	FT	Macdonald,	NW5R80000LCD	4	1	28.20	8	34.794
10/12/09	WDB	FT	Macdonald,	NW3R55000LCD	3	2	27.00	7	35.598
10/05/09	MOH	FT	Macdonald,	NW3R50000LCD	3	1	28.60	14	33.525
09/21/09	MOH	FT	Macdonald,	NW2R31000LCD	3	1	29.00	7	33.266
09/14/09	MOH	FT	Miller, David	NW4R50000LCD	5	7	27.00	13	32.757
09/01/09	PCD	FT	Jackson,	NW5000L5CD	7	3	29.80	10	31.758
08/22/09	INDY	FT	Tetrick,	MONCIRCLE	6	6	28.00	7	33.256
08/15/09	FHLD	FT	Sears, Brian	NJSS3YC-L1	1	4	28.20	8	34.509
08/07/09	M	FT	Pierce,	3-4YRHGNW3	2	5	27.60	7	34.359
07/31/09	M	SY	Pierce,	H-G NW3 CD	1	6	28.20		33.493



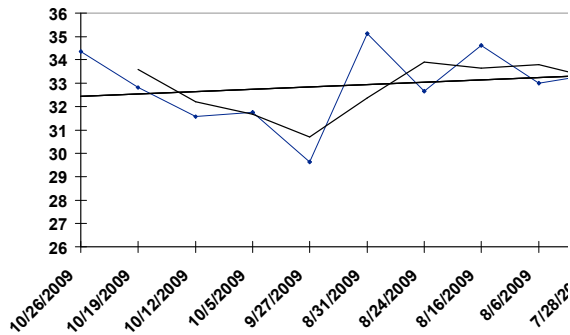


WDB 11/02/09 RACE: 7 1 MILE P

4 HAPPY LARRY

- b 4YO g PP 4 Baillargeon, Mario J

Date	Trk	Cond	Driver	Class	PP	Fin	Last Q	Layoff Days	TS
10/26/09	WDB	FT	Waples,	NW12000L6CD	5	1	27.00	7	34.353
10/19/09	WDB	FT	Baillargeon,	NW12000L6CD	1	5	27.80	7	32.823
10/12/09	WDB	FT	Baillargeon,	NW4R100000L	4	5	28.40	7	31.572
10/05/09	MOH	FT	Waples,	NW6000L6CD	6	1	28.80	8	31.761
09/27/09	MOH	FT	Brown, Doug S	20000CLMCD	3	8	30.60	27	29.624
08/31/09	MOH	FT		NW4R115000L	0	-7	28.40	7	35.130
08/24/09	MOH	FT	Waples,	NW15100L6CD	4	6	27.40	8	32.665
08/16/09	MOH	FT	Jamieson,	NW6100L6CD	3	1	27.60	10	34.631
08/06/09	MOH	FT	Zeron,	12000CLMHP	4	4	26.80	9	32.991
07/28/09	GEOD	FT	Langdon,	NW4000L4CD	6	4	29.60		33.403

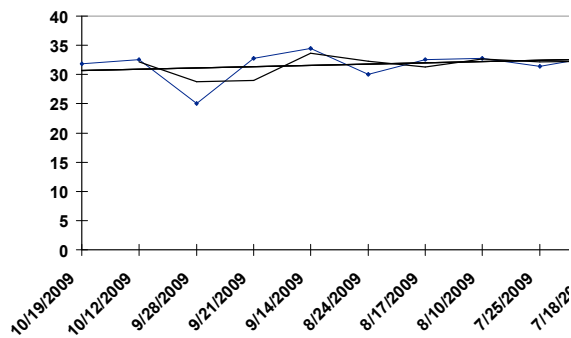


WDB 11/02/09 RACE: 7 1 MILE P

5 KID CARSON

- b 3YO c PP 5 Jamieson, Jody C

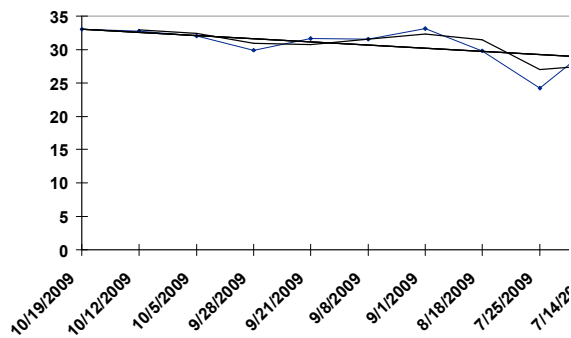
Date	Trk	Cond	Driver	Class	PP	Fin	Last Q	Layoff Days	TS
10/19/09	WDB	FT	Jamieson,	NW3R50000LCD	1	3	28.20	7	31.822
10/12/09	WDB	FT	Jamieson,	NW3R55000LCD	8	3	26.20	14	32.532
09/28/09	MOH	GD	Jamieson,	NW3R55000LCD	6	9	32.40	7	25.079
09/21/09	MOH	GD	Jamieson,	NW3R53000LCD	8	4	26.60	7	32.801
09/14/09	MOH	FT	Jamieson,	NW4R50000LCD	2	1	26.80	21	34.432
08/24/09	MOH	FT	Jamieson,	NW2R30000LCD	7	1	28.20	7	30.079
08/17/09	MOH	FT	Jamieson,	NW2R32000LCD	7	2	26.20	7	32.548
08/10/09	MOH	FT	Jamieson,	NW2R30000LCD	8	1	27.80	16	32.810
07/25/09	MOH	GD	Jamieson,	D-CDN BRDRS	9	9	30.20	7	31.388
07/18/09	MOH	FT	Jamieson,	CDN BREEDERS	4	2	27.40		33.114



WDB 11/02/09 RACE: 7 1 MILE P

6 NOVADANE PEPERCORN - bl 5YO g PP 6 Brewer, Jason J

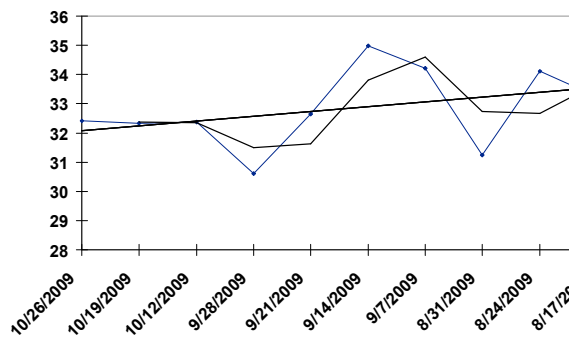
Date	Trk	Cond	Driver	Class	PP	Fin	Last Q	Layoff Days	TS
10/19/09	WDB	FT	Brewer, Jason	NW3R5000LCD	2	1	28.60	7	33.055
10/12/09	WDB	FT	Brewer, Jason	NW3R5500LCD	5	4	26.60	7	32.770
10/05/09	MOH	FT	Brewer, Jason	NW3R5000LCD	5	2	28.60	7	32.020
09/28/09	MOH	GD	Brewer, Jason	NW3R5500LCD	8	3	29.00	7	29.902
09/21/09	MOH	FT	Brewer, Jason	NW2R3100LCD	5	2	28.60	13	31.628
09/08/09	GEOD	FT	Kerwood,	10000CLMCD	1	3	29.40	7	31.523
09/01/09	GEOD	FT	Shepherd,	NW2R26500L	7	5	28.00	14	33.162
08/18/09	KD	GD	Gassien,	NW2R30000L	9	9	35.40	24	29.768
07/25/09	KD	GD	Brown, Doug S	NW2R30000L	9	7	32.40	11	24.194
07/14/09	GEOD	FT	Kerwood,	NW2R26000L	8	5	28.40		31.073



WDB 11/02/09 RACE: 7 1 MILE P

7 SADLER HANOVER - b 4YO g PP 7 Zeron, Richard

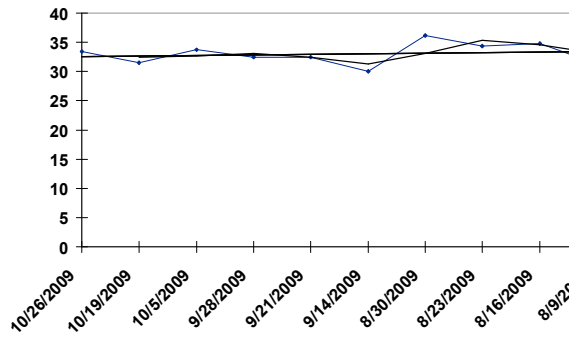
Date	Trk	Cond	Driver	Class	PP	Fin	Last Q	Layoff Days	TS
10/26/09	WDB	FT	Saftic,	NW4R100000L	7	5	27.40	7	32.404
10/19/09	WDB	FT	Saftic,	NW12000L6CD	6	2	28.00	7	32.335
10/12/09	WDB	FT	Saftic,	NW4R100000L	5	2	27.60	14	32.366
09/28/09	MOH	GD	Saftic,	NW4R116000L	2	4	29.60	7	30.617
09/21/09	MOH	GD	Saftic,	NW4R115000L	7	4	26.80	7	32.643
09/14/09	MOH	FT	Saftic,	NW4R50000LCD	9	1	28.40	7	34.972
09/07/09	MOH	FT	Saftic,	NW3R50000LCD	5	2	27.00	7	34.217
08/31/09	MOH	FT	Saftic,	NW3R54000LCD	9	3	27.80	7	31.243
08/24/09	MOH	FT	Saftic,	NW3R50000LCD	3	3	28.00	7	34.106
08/17/09	MOH	FT	Saftic,	NW3R50000LCD	8	2	28.00		33.247



WDB 11/02/09 RACE: 7 1 MILE P

8 MCARTICAL - b 4YO g PP 8 Hudon, Phillip

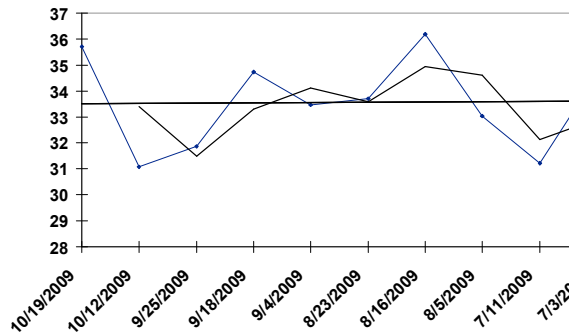
Date	Trk	Cond	Driver	Class	PP	Fin	Last Q	Layoff Days	TS
10/26/09	WDB	FT	Hudon,	NW4R100000L	4	8	28.40	7	33.411
10/19/09	WDB	FT	Hudon,	NW12000L6CD	8	4	28.60	14	31.559
10/05/09	MOH	FT	Hudon,	NW12000L6CD	5	1	28.80	7	33.714
09/28/09	MOH	GD	Hudon,	NW6000L6CD	6	1	30.00	7	32.482
09/21/09	MOH	GD	Hudon,	NW6000L6CD	4	6	29.60	7	32.482
09/14/09	MOH	FT	Condren,	NW4R50000LCD	10	8	28.20	15	30.035
08/30/09	MOH	FT	Jamieson,	NW6000L6CD	2	2	28.00	7	36.218
08/23/09	MOH	FT	Condren,	NW6000L6CD	5	4	28.00	7	34.340
08/16/09	MOH	FT	Condren,	NW6100L6CD	1	4	28.20	7	34.852
08/09/09	MOH	FT	Jones, R	NW6000L6CD	7	8	27.20		31.299



WDB 11/02/09 RACE: 7 1 MILE P

9 FIRE ON THE WATER - br 3YO c PP 9 Fillion, Sylvain R

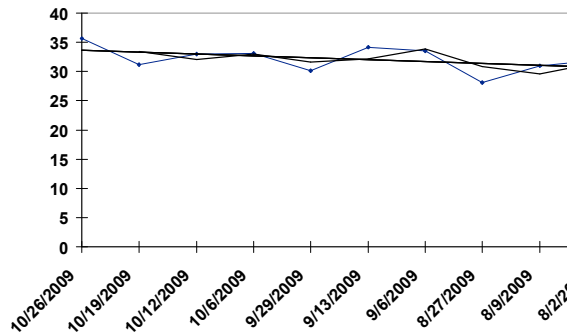
Date	Trk	Cond	Driver	Class	PP	Fin	Last Q	Layoff Days	TS
10/19/09	WDB	FT		NW4R100000L	0	-7	27.80	7	35.720
10/12/09	WDB	FT	Macdonell,	NW4R100000L	7	7	28.00	17	31.090
09/25/09	CHST	FT	Tetrick, Tim	NW8 CD	6	7	28.60	7	31.862
09/18/09	CHST	FT	Miller, Andy	NW8 CD	5	6	28.20	14	34.723
09/04/09	CHST	FT	Miller, Andy	NW8 CD	2	7	30.00	12	33.478
08/23/09	CHST	FT	Tetrick, Tim	PASS 3YRCG	3	3	29.20	7	33.698
08/16/09	CHST	FT	Tetrick, Tim	BATTLE 2	4	1	27.60	11	36.182
08/05/09	CHST	FT	Tetrick, Tim	HG NW5 CD	7	1	27.40	25	33.044
07/11/09	MOH	FT	Zeron,	SUMMERTIME	8	6	27.60	8	31.230
07/03/09	MOH	FT	Macdonell,	SUMMERTIME	7	2	27.80		34.625



WDB 11/02/09 RACE: 8 1 MILE P

1 MAJO JUST DO IT - br 3YO c PP 1 Baillargeon, Mario J

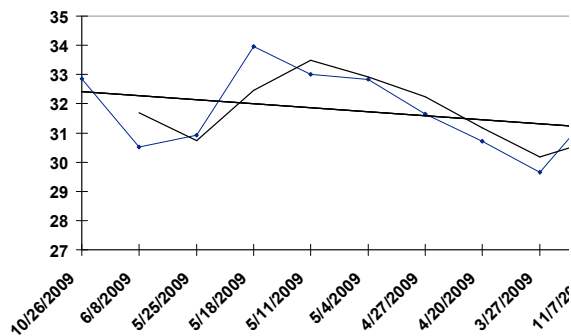
Date	Trk	Cond	Driver	Class	PP	Fin	Last Q	Layoff Days	TS
10/26/09	WDB	FT	Baillargeon,	NW3R54000LCD	1	4	27.00	7	35.679
10/19/09	WDB	FT	Baillargeon,	NW3R50000LCD	6	4	27.40	7	31.196
10/12/09	WDB	FT	Baillargeon,	NW2R32000LCD	8	2	28.00	6	32.967
10/06/09	GEOD	SY	Baillargeon,	NW2R25000L	5	1	28.60	7	33.103
09/29/09	GEOD	GD	Baillargeon,	NW2R25000L	5	1	30.40	16	30.165
09/13/09	RIDC	FT		NW3R50000LCD	0	-7	29.80	7	34.189
09/06/09	QUE	FT	Lachance,	3QB-COND	1	1	29.00	10	33.546
08/27/09	RIDC	FT	Lachance,	QUA	4	1	30.20	18	28.150
08/09/09	RIDC	FT	Lachance,	NW3R50000LCD	4	9	28.80	7	30.969
08/02/09	RIDC	FT	Lachance,	NW2R30000L	2	4	31.00		31.976



WDB 11/02/09 RACE: 8 1 MILE P

2 ROAD HAMMER - b 4YO g PP 2 Brewer, Jason J

Date	Trk	Cond	Driver	Class	PP	Fin	Last Q	Layoff Days	TS
10/26/09	MOH	FT	Brewer, Jason	QUA	6	1	27.80	140	32.848
06/08/09	MOH	FT	Brewer, Jason	NW3R50000LCD	8	6	28.20	14	30.522
05/25/09	MOH	FT	Brewer, Jason	NW3R50000LCD	7	10	28.00	7	30.933
05/18/09	MOH	FT	Brewer, Jason	NW4R50000LCD	5	3	27.00	7	33.964
05/11/09	MOH	FT	Brewer, Jason	NW3R50000LCD	3	4	27.00	7	33.003
05/04/09	MOH	FT	Brewer, Jason	NW3R50000LCD	1	7	27.40	7	32.836
04/27/09	WDB	FT	Brewer, Jason	NW3R54000LCD	1	2	28.60	7	31.641
04/20/09	WDB	SY	Brewer, Jason	NW3R50000LCD	8	6	26.20	24	30.711
03/27/09	MOH	FT	Brewer, Jason	QUA	4	5	28.60	140	29.643
11/07/08	WDB	GD	Brewer, Jason	NW3R55500LCD	2	3	28.40		31.928

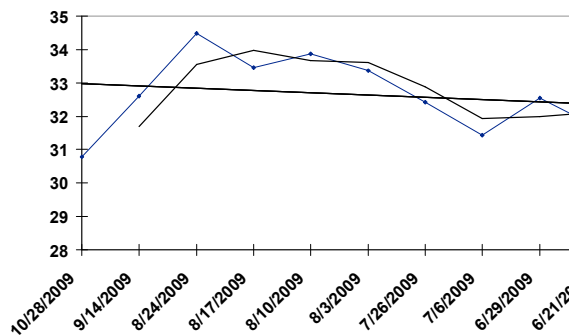




WDB 11/02/09 RACE: 8 1 MILE P

3 REAL SHOWDOWN - b 3YO g PP 3 Zeron, Richard

Date	Trk	Cond	Driver	Class	PP	Fin	Last Q	Layoff Days	TS
10/28/09	WR	GD	Novick, Mike	QUA	4	1	29.60	44	30.788
09/14/09	MOH	FT	Zeron,	NW4R50000LCD	3	10	29.80	21	32.608
08/24/09	MOH	FT	Zeron,	NW3R50000LCD	2	6	28.00	7	34.486
08/17/09	MOH	FT	Baillargeon,	NW2R32000LCD	2	1	28.20	7	33.455
08/10/09	MOH	FT	Zeron,	NW2R30000LCD	1	5	29.60	7	33.860
08/03/09	MOH	FT	Zeron,	NW2R15000LCD	6	1	28.60	8	33.360
07/26/09	MOH	GD	Zeron,	NW2R15000LCD	7	2	29.60	20	32.425
07/06/09	MOH	FT	Jamieson,	NW2R16000LCD	9	9	30.20	7	31.439
06/29/09	MOH	GD	Jamieson,	NW2R15000LCD	6	4	29.80	8	32.551
06/21/09	MOH	FT	Macdonell,	3YR-NW22000L	4	6	28.20		31.685

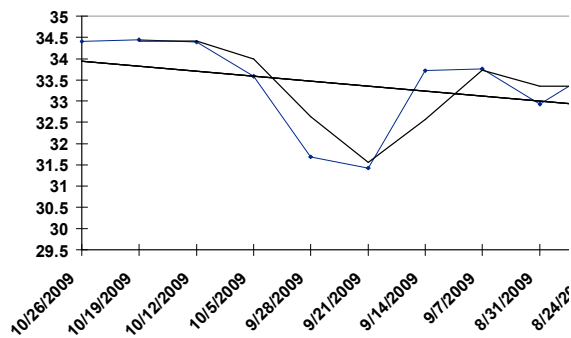


WDB 11/02/09 RACE: 8 1 MILE P

4 YANKEE LUKE

- b 3YO g PP 4 Ouellette, Luc R

Date	Trk	Cond	Driver	Class	PP	Fin	Last Q	Layoff Days	TS
10/26/09	WDB	FT	Ouellette,	NW3R54000LCD	7	1	27.60	7	34.400
10/19/09	WDB	FT	Ouellette,	NW2R30000LCD	8	1	27.40	7	34.444
10/12/09	WDB	FT	Ouellette,	NW2R32000LCD	10	5	28.00	7	34.394
10/05/09	MOH	FT	Ouellette,	NW2R32000LCD	6	2	28.40	7	33.588
09/28/09	MOH	GD	Ouellette,	NW2R31000LCD	10	4	31.60	7	31.685
09/21/09	MOH	FT	Moiseyev,	NW2R31000LCD	8	9	30.60	7	31.426
09/14/09	MOH	FT	Saftic,	NW2R17000LCD	1	1	29.40	7	33.714
09/07/09	MOH	FT	Ouellette,	NW2R17000LCD	5	9	28.80	7	33.759
08/31/09	MOH	FT	Ouellette,	NW2R17500LCD	4	4	27.60	7	32.930
08/24/09	MOH	FT	Ouellette,	NW2R15000LCD	3	3	28.60		33.759

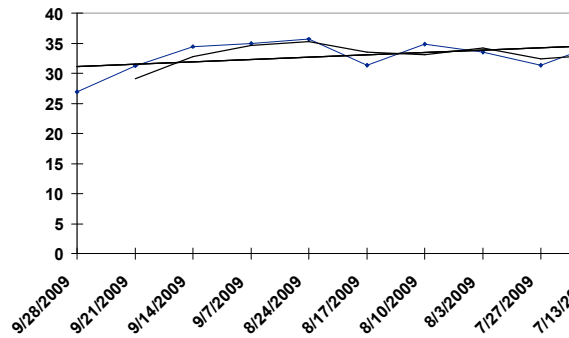


WDB 11/02/09 RACE: 8 1 MILE P

5 RAVE ON

- b 3YO g PP 5 Macdonald, Mark J

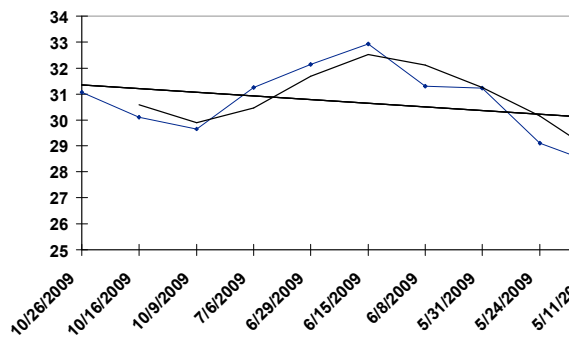
Date	Trk	Cond	Driver	Class	PP	Fin	Last Q	Layoff Days	TS
09/28/09	MOH	GD	Baillargeon,	NW3R55000LCD	9	7	31.40	7	26.925
09/21/09	MOH	GD	Baillargeon,	NW3R53000LCD	7	3	27.00	7	31.214
09/14/09	MOH	FT	Zeron,	NW4R50000LCD	6	5	27.60	7	34.397
09/07/09	MOH	FT	Zeron,	NW3R50000LCD	1	3	28.20	14	34.972
08/24/09	MOH	FT		NW3R50000LCD	0	-7	28.00	7	35.643
08/17/09	MOH	FT	Shepherd,	NW3R50000LCD	2	7	30.40	7	31.388
08/10/09	MOH	FT	Ouellette,	NW3R53000LCD	4	2	28.40	7	34.865
08/03/09	MOH	FT	Ouellette,	NW2R30000LCD	7	1	28.80	7	33.544
07/27/09	MOH	GD	Macdonell,	NW2R30000LCD	4	8	30.20	14	31.299
07/13/09	MOH	FT	Macdonell,	NW3R50000LCD	9	5	28.40		34.922



WDB 11/02/09 RACE: 8 1 MILE P

6 GALYN KODY - b 4YO g PP 6 Hudon, Patrick J

Date	Trk	Cond	Driver	Class	PP	Fin	Last Q	Layoff Days	TS
10/26/09	WDB	FT	Hudon,	NW3R54000LCD	8	8	27.20	10	31.071
10/16/09	MOH	FT	Hudon,	QUA	8	4	28.40	7	30.117
10/09/09	MOH	SY	Hudon,	QUA	1	4	29.00	95	29.656
07/06/09	MOH	FT	Hudon,	NW2R16000LCD	6	1	27.20	7	31.255
06/29/09	MOH	GD	Hudon,	NW2R15000LCD	1	2	28.60	14	32.134
06/15/09	MOH	FT	Hudon,	NW2R15000LCD	2	4	28.00	7	32.924
06/08/09	MOH	FT	Hudon,	NW2R16000LCD	7	5	27.60	8	31.293
05/31/09	MOH	FT	Hudon,	NW1R7500LCD	2	1	28.00	7	31.224
05/24/09	MOH	FT	Hudon,	NW1R7500LCD	7	6	27.40	13	29.106
05/11/09	MOH	FT	Hudon,	NW1R8000LCD	5	6	28.80		28.303

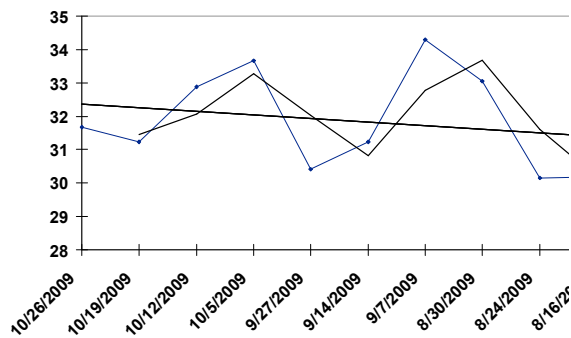


WDB 11/02/09 RACE: 8 1 MILE P

7 ARDOR S OPEN

- b 3YO g PP 7 Jamieson, Jody C

Date	Trk	Cond	Driver	Class	PP	Fin	Last Q	Layoff Days	TS
10/26/09	WDB	FT	Saftic,	NW2R1500LCD	3	1	28.40	7	31.684
10/19/09	WDB	FT	Saftic,	NW2R1700LCD	4	2	28.20	7	31.240
10/12/09	WDB	FT	Saftic,	NW2R1550LCD	2	3	27.80	7	32.892
10/05/09	MOH	FT	Drury,	NW2R1500LCD	2	10	28.80	8	33.664
09/27/09	MOH	FT	Drury,	NW7500L6CD	6	6	29.60	13	30.408
09/14/09	MOH	FT	Watt, Bradley	NW2R1700LCD	3	10	30.60	7	31.236
09/07/09	MOH	FT	Saftic,	NW2R1700LCD	4	2	27.80	8	34.302
08/30/09	MOH	FT	Watt, Bradley	NW1R7500LCD	6	1	27.60	6	33.057
08/24/09	MOH	FT	Watt, Bradley	NW1R7500LCD	9	3	28.60	8	30.161
08/16/09	MOH	FT	Watt, Bradley	NW1R7500LCD	9	5	28.20		30.187

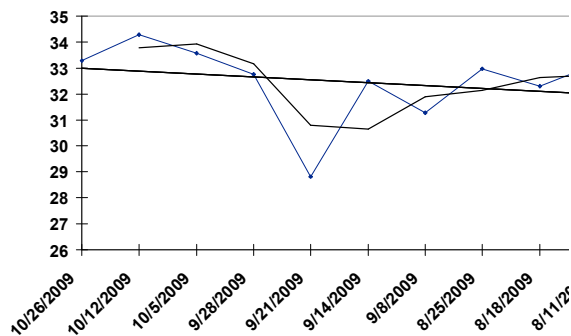


WDB 11/02/09 RACE: 8 1 MILE P

8 D I HANOVER

- br 3YO g PP 8 Waples, Randall W

Date	Trk	Cond	Driver	Class	PP	Fin	Last Q	Layoff Days	TS
10/26/09	WDB	FT	Waples,	NW3R54000LCD	10	5	28.20	14	33.274
10/12/09	WDB	FT	Waples,	NW3R55000LCD	1	6	26.80	7	34.284
10/05/09	MOH	FT	Waples,	NW3R50000LCD	6	4	28.40	7	33.556
09/28/09	MOH	GD	Waples,	NW2R31000LCD	9	2	30.80	7	32.766
09/21/09	MOH	FT	Saftic,	NW2R31000LCD	9	8	29.20	7	28.828
09/14/09	MOH	FT	Macdonell,	NW2R30000LCD	6	8	27.00	6	32.497
09/08/09	KD	FT	Rae, Bradley	NW2R30000LCD	9	1	31.20	14	31.281
08/25/09	KD	FT	Rae, Bradley	NW2R30000L	8	1	29.00	7	32.977
08/18/09	KD	GD	Tackoor, Des	NW2R30000L	4	1	30.20	7	32.309
08/11/09	KD	FT	Tackoor, Des	NW2R30000L	9	1	29.60		33.160

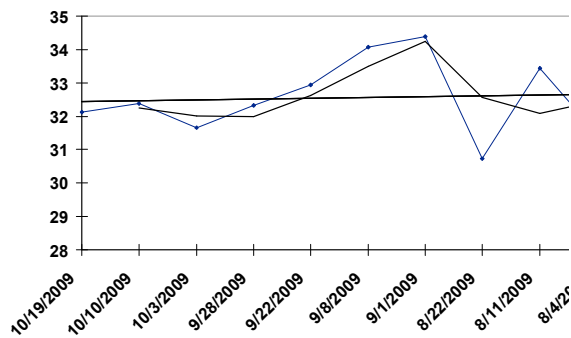


WDB 11/02/09 RACE: 8 1 MILE P

9 LAKERS VETT

- bl 3YO c PP 9 Macdonald, Anthony A

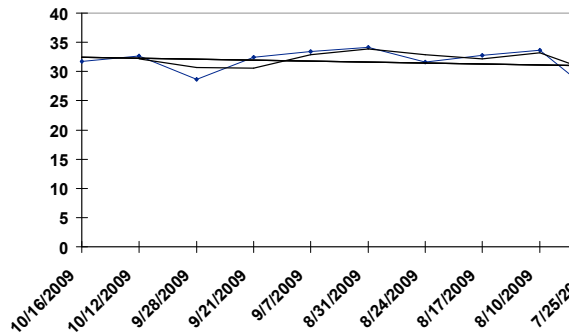
Date	Trk	Cond	Driver	Class	PP	Fin	Last Q	Layoff Days	TS
10/19/09	WDB	FT	Macdonald,	NW3R5000LCD	4	9	30.00	9	32.122
10/10/09	WDB	FT	Hudon,	D-ONSS-GF	7	7	28.00	7	32.373
10/03/09	MOH	GD	Macdonald,	ONSS-GE	7	5	28.20	5	31.660
09/28/09	MOH	GD	Macdonald,	NW2R31000LCD	7	1	30.00	6	32.324
09/22/09	GEOD	FT	Macdonald,	NW2R25000L	5	2	28.40	14	32.933
09/08/09	GEOD	FT	Macdonald,	NW2R25000L	6	2	27.60	7	34.069
09/01/09	GEOD	FT	Macdonald,	NW2R26500L	3	2	29.00	10	34.395
08/22/09	KD	GD	Cisco, Scott	ONSS-RS	2	5	30.80	11	30.737
08/11/09	GEOD	FT	Macdonald,	NW2R25000L	1	2	29.20	7	33.436
08/04/09	GEOD	FT	Macdonald,	NW2R25000L	8	4	29.60		31.464



**WDB** 11/02/09 RACE: 8 1 MILE P

**10 UNCHAINED DESIRE - b 3YO g PP 10 Hudon, Phillip**

<u>Date</u>	<u>Trk</u>	<u>Cond</u>	<u>Driver</u>	<u>Class</u>	<u>PP</u>	<u>Fin</u>	<u>Last Q</u>	<u>Layoff Days</u>	<u>TS</u>
10/16/09	GEOD	FT	Langdon,	NW3R5000LCD	6	6	29.80	4	<b>31.673</b>
10/12/09	WDB	FT	Waples,	NW2R32000LCD	2	8	28.00	14	<b>32.648</b>
09/28/09	MOH	GD	Hudon,	NW3R55000LCD	1	10	32.00	7	<b>28.663</b>
09/21/09	MOH	FT	Waples,	NW2R31000LCD	7	4	29.20	14	<b>32.444</b>
09/07/09	MOH	FT	Waples,	NW2R30000LCD	5	2	28.20	7	<b>33.436</b>
08/31/09	MOH	FT	Waples,	NW2R17500LCD	3	1	27.60	7	<b>34.195</b>
08/24/09	MOH	FT	Waples,	NW2R15000LCD	8	8	30.80	7	<b>31.641</b>
08/17/09	MOH	FT	Waples,	NW2R15000LCD	4	4	27.80	7	<b>32.734</b>
08/10/09	MOH	FT	Macdonell,	NW2R15000LCD	9	3	29.00	16	<b>33.607</b>
07/25/09	KD	GD	Brown, Gord D	NW2R30000L	6	6	31.60		<b>25.779</b>

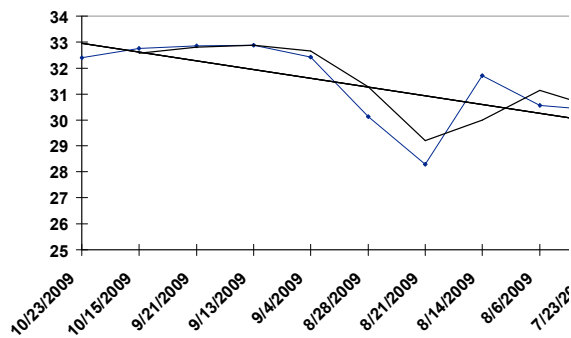




WDB 11/02/09 RACE: 9 1 MILE T

1 SUNDOWNER BOB - b 7YO g PP 1 Moiseyev, Jack G

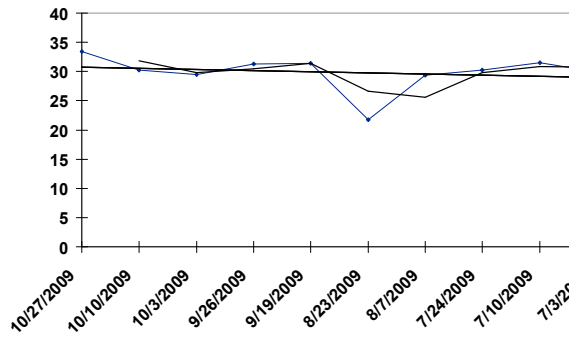
Date	Trk	Cond	Driver	Class	PP	Fin	Last Q	Layoff Days	TS
10/23/09	WDB	SY		OP45000CLM	0	-7	28.00	8	32.398
10/15/09	WDB	FT	Ouellette,	OP70000CLM	9	8	28.20	24	32.760
09/21/09	MOH	GD	Moiseyev,	OP45000CLM	9	1	28.40	8	32.861
09/13/09	MOH	FT	Moiseyev,	OP30000CLM	6	1	29.00	9	32.886
09/04/09	MOH	FT	Moiseyev,	23000CLMHP	6	1	28.00	7	32.425
08/28/09	MOH	FT	Moiseyev,	24000CLMHP	8	3	28.60	7	30.124
08/21/09	MOH	FT	Moiseyev,	25000CLMHP	7	5	28.40	7	28.297
08/14/09	MOH	FT	Moiseyev,	23000CLMHP	2	1	28.40	8	31.698
08/06/09	MOH	FT	Moiseyev,	15000CLM	10	1	29.80	14	30.553
07/23/09	MOH	FT	Waples,	20000CLMHP	6	8	31.00		30.370



WDB 11/02/09 RACE: 9 1 MILE T

2 HARTMANN - br 4YO h PP 2 Jamieson, Jody C

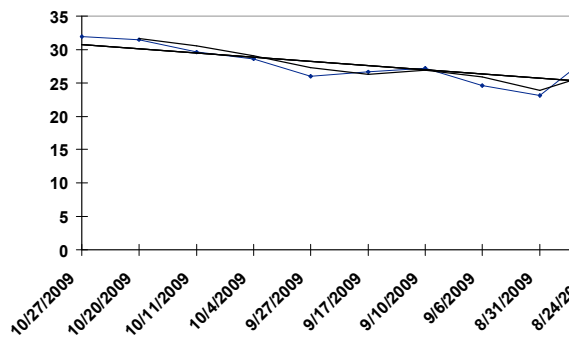
Date	Trk	Cond	Driver	Class	PP	Fin	Last Q	Layoff Days	TS
10/27/09	GEOD	FT	Jamieson,	PREF-CD	6	5	29.60	17	33.429
10/10/09	WDB	FT	Jamieson,	NW12600L6CD	6	2	29.20	7	30.201
10/03/09	GEOD	GD	Langdon,	NW3R60000LCD	3	1	31.80	7	29.512
09/26/09	FLMD	FT	Jamieson,	NA500PSCD	5	1	29.80	7	31.333
09/19/09	MOH	FT	Tetrick, Tim	NW12000L6CD	8	7	28.80	27	31.445
08/23/09	CHST	FT	Brennan,	NW22500L5	8	7	38.00	16	21.799
08/07/09	YR	FT	Lachance,	NW18000L6	3	5	30.00	14	29.388
07/24/09	YR	FT	Lachance,	NW18000L6	1	6	30.20	14	30.247
07/10/09	YR	FT	Lachance,	NW18000L6	1	2	30.00	7	31.490
07/03/09	YR	FT	Meittinis,	NW12000L6	5	3	30.20		29.967



WDB 11/02/09 RACE: 9 1 MILE T

3 J S CHISUM - b 4YO g PP 3 Byron, Stephen R

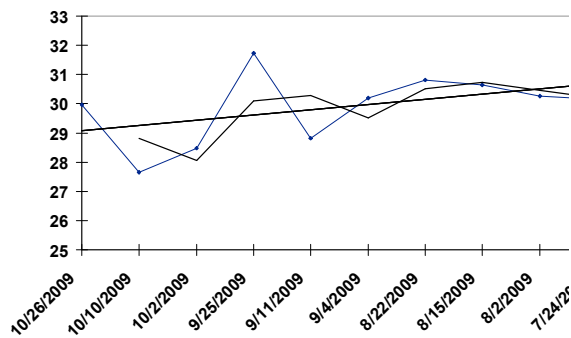
Date	Trk	Cond	Driver	Class	PP	Fin	Last Q	Layoff Days	TS
10/27/09	GEOD	FT	Byron,	PREF-CD	9	7	28.00	7	31.934
10/20/09	GEOD	FT	Byron,	PREF-CD	2	3	29.80	9	31.458
10/11/09	RIDC	FT	Coville,	NW7000L5CD	1	1	30.60	7	29.576
10/04/09	RIDC	FT	Coville,	NW3R50000LCD	2	1	30.40	7	28.563
09/27/09	RIDC	SY	Coville,	NW7000L5CD	3	7	30.60	10	25.995
09/17/09	RIDC	FT	Coville,	NW2500L5CD	6	1	30.40	7	26.627
09/10/09	RIDC	FT	Mcdonald, Ted	QUA	6	1	32.00	4	27.156
09/06/09	FLMD	FT	Watt, Bradley	NA1000PSCD	8	8	33.60	6	24.620
08/31/09	MOH	FT	Clements,	NW18000L6CD	6	7	32.80	7	23.138
08/24/09	MOH	FT	Clements,	NW19500L6CD	6	8	28.40		29.934



WDB 11/02/09 RACE: 9 1 MILE T

4 JOEY THREE CHINS - b 5YO g PP 4 Ouellette, Luc R

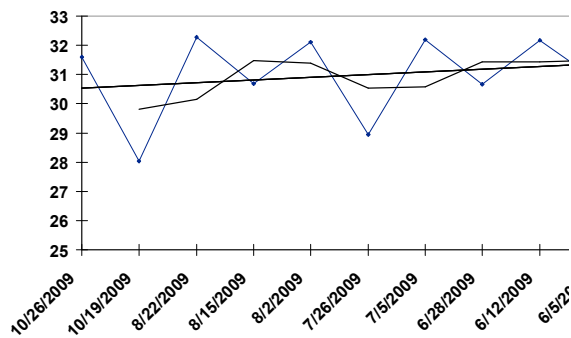
Date	Trk	Cond	Driver	Class	PP	Fin	Last Q	Layoff Days	TS
10/26/09	WDB	FT	Saftic,	NW12000L6CD	9	9	28.20	16	29.976
10/10/09	WDB	FT	Saftic,	NW12600L6CD	8	7	30.20	8	27.655
10/02/09	MOH	SY	Crawford,	NW5000L6CD	9	1	29.20	7	28.474
09/25/09	MOH	FT	Saftic,	NW8000L6CD	4	7	29.00	14	31.729
09/11/09	MOH	FT	Saftic,	NW8000L6CD	7	8	29.80	7	28.828
09/04/09	MOH	FT	Saftic,	NW8000L6CD	8	5	29.20	13	30.206
08/22/09	MOH	GD	Ouellette,	NW12000L6CD	10	6	29.20	7	30.819
08/15/09	MOH	FT	Ouellette,	NW12000L6CD	1	4	29.20	13	30.655
08/02/09	MOH	FT	Brewer, Jason	NW4R115000L	1	6	28.40	9	30.263
07/24/09	MOH	GD	Saftic,	NW8000L6CD	10	1	29.20		30.155



WDB 11/02/09 RACE: 9 1 MILE T

5 SUPERFAST STUART - br 4YO h PP 5 Waples, Randall W

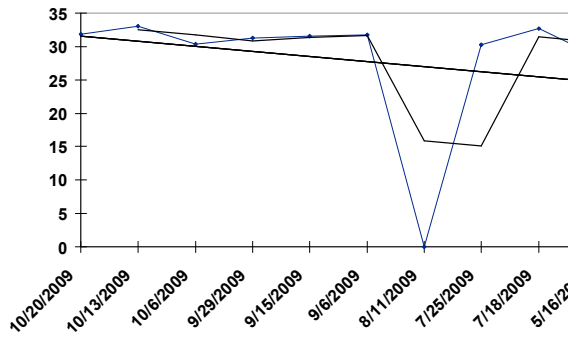
Date	Trk	Cond	Driver	Class	PP	Fin	Last Q	Layoff Days	TS
10/26/09	WDB	FT	Waples,	NW4R100000L	7	7	29.60	7	31.609
10/19/09	MOH	FT	Weber, Shane	QUA	5	1	31.40	58	28.031
08/22/09	MOH	GD		NW12000L6CD	0	-7	29.40	7	32.273
08/15/09	MOH	FT	Waples,	NW12000L6CD	9	6	28.00	13	30.680
08/02/09	MOH	FT	Waples,	NW4R115000L	6	3	29.60	7	32.102
07/26/09	MOH	GD	Waples,	NW4R110000L	7	3	29.60	21	28.954
07/05/09	MOH	FT		NW12000L6CD	0	-7	29.60	7	32.203
06/28/09	MOH	FT	Ritchie,	NW4R90000LCD	8	7	29.40	16	30.674
06/12/09	MOH	FT	Waples,	NW4R90000LCD	5	2	29.20	7	32.178
06/05/09	MOH	FT	Waples,	NW4R116000L	1	4	29.20		30.800



WDB 11/02/09 RACE: 9 1 MILE T

6 ABBEY ROAD C - b 10YO g PP 6 Jones, Keith E

Date	Trk	Cond	Driver	Class	PP	Fin	Last Q	Layoff Days	TS
10/20/09	GEOD	FT	Jones, Keith	PREF-CD	3	5	30.40	7	31.856
10/13/09	GEOD	FT	Jones, Keith	PREF-CD	1	3	29.80	7	33.096
10/06/09	GEOD	SY	Jones, Keith	PREFERRED	4	4	30.80	7	30.368
09/29/09	GEOD	GD	Jones, Keith	PREF-CD	1	2	29.40	14	31.249
09/15/09	GEOD	FT	Jones, Keith	PREF-CD	2	4	29.80	9	31.575
09/06/09	MOH	FT	Jones, Keith	NW13000L6CD	10	9	29.00	26	31.717
08/11/09	WODS	FT	Jones, Keith	NW3000L3CD	7	2	31.40	17	
07/25/09	HNVR	FT	Jones, Keith	NW4500L3CD	7	3	29.20	7	30.303
07/18/09	GEOD	FT	Jones, Keith	NW3R60000LCD	2	2	29.00	63	32.718
05/16/09	MOH	FT	Jones, Keith	NW8000L6CD	1	6	31.20		28.562

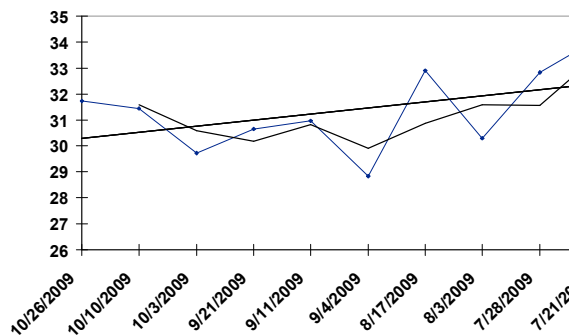


WDB 11/02/09 RACE: 9 1 MILE T

7 FAMOUS MARK

- b 6YO g PP 7 Baillargeon, Mario J

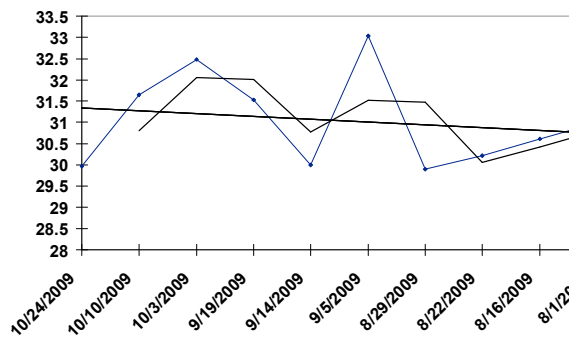
Date	Trk	Cond	Driver	Class	PP	Fin	Last Q	Layoff Days	TS
10/26/09	WDB	FT	Baillargeon,	NW12000L6CD	5	3	28.20	16	31.734
10/10/09	GEOD	FT	Coulter,	NW3R60000LCD	8	1	29.40	7	31.432
10/03/09	MOH	GD	Baillargeon,	NW12000L6CD	2	3	30.20	12	29.725
09/21/09	MOH	GD	Baillargeon,	NW18000L6CD	3	7	29.80	10	30.648
09/11/09	MOH	FT	Baillargeon,	OP70000CLM	6	6	30.20	7	30.977
09/04/09	MOH	FT	Ouellette,	OP70000CLM	8	7	29.40	18	28.840
08/17/09	MOH	FT	Baillargeon,	OP70000CLM	5	3	27.80	14	32.893
08/03/09	GRVR	FT	Baillargeon,	PREFERRED	1	6	29.80	6	30.302
07/28/09	GEOD	FT	Baillargeon,	PREFERRED	2	1	28.80	7	32.835
07/21/09	GEOD	FT	Filion,	PREFERRED	2	2	28.40		34.108



WDB 11/02/09 RACE: 9 1 MILE T

8 JTLADY STRONG - br 5YO m PP 8 Condren, Stephen

Date	Trk	Cond	Driver	Class	PP	Fin	Last Q	Layoff Days	TS
10/24/09	GEOD	FT	Kovacs, John	F&M-PREF-CD	6	5	30.40	14	29.969
10/10/09	GEOD	FT	Kovacs, John	F&M-PREF-CD	1	4	29.60	7	31.641
10/03/09	GEOD	GD	Kovacs, John	F&M-PREF-CD	1	2	28.80	14	32.476
09/19/09	GEOD	FT	Macdonald,	F&M-PREF-CD	6	7	30.60	5	31.536
09/14/09	MOH	FT	Jamieson,	NW18000L6CD	10	5	29.00	9	29.997
09/05/09	GEOD	FT	Macdonald,	F&M-PREF-CD	4	1	29.80	7	33.038
08/29/09	HNVR	FT	Mcclure,	F&M-PREF	8	2	29.40	7	29.903
08/22/09	GEOD	GD	Drury,	F&M-PREF-CD	2	2	29.40	6	30.224
08/16/09	FLMD	FT	Jamieson,	F&M-PREF-CD	8	3	30.20	15	30.613
08/01/09	GEOD	FT	Jones, Norman	F&M-PREF-CD	6	6	28.60		30.994

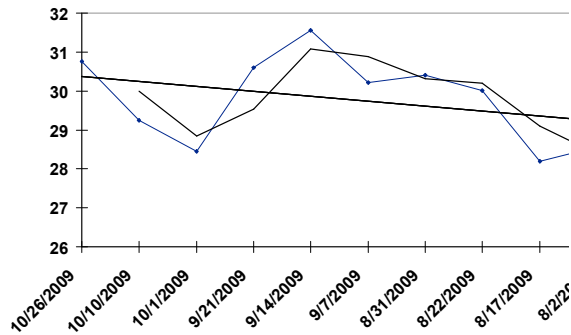




WDB 11/02/09 RACE: 9 1 MILE T

9 DURABLE DUKE - b 5YO g PP 9 Macdonald, Mark J

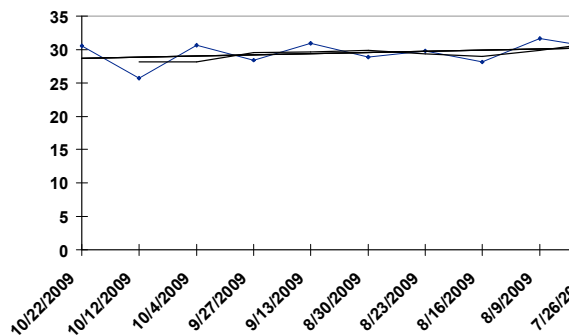
Date	Trk	Cond	Driver	Class	PP	Fin	Last Q	Layoff Days	TS
10/26/09	WDB	FT	Macdonell,	NW12000L6CD	4	4	27.00	16	30.761
10/10/09	WDB	FT	Macdonald,	NW12600L6CD	7	5	30.80	9	29.244
10/01/09	MOH	FT	Macdonald,	NW27000L6CD	8	7	28.40	10	28.455
09/21/09	MOH	GD	Waples,	NW18000L6CD	6	3	29.20	7	30.598
09/14/09	MOH	FT	Waples,	NW18000L6CD	5	2	28.20	7	31.559
09/07/09	MOH	FT	Waples,	NW18000L6CD	2	6	28.20	7	30.218
08/31/09	MOH	FT	Macdonell,	NW18000L6CD	5	3	28.60	9	30.402
08/22/09	MOH	GD	Filion,	NW12000L6CD	5	1	29.00	5	30.016
08/17/09	MOH	FT	Waples,	NW18000L6CD	9	7	28.40	15	28.202
08/02/09	MOH	FT	Macdonald,	NW4R115000L	4	7	28.40		28.568



WDB 11/02/09 RACE: 9 1 MILE T

**10 CAPTAIN SPARROW** - br 4YO g PP 10 Macdonald, Anthony A

Date	Trk	Cond	Driver	Class	PP	Fin	Last Q	Layoff Days	TS
10/22/09	WDB	FT	Baillargeon,	NW8000L6CD	5	3	29.60	10	<b>30.521</b>
10/12/09	LON	FT	Shepherd,	PREFERRED	4	6	30.20	8	<b>25.682</b>
10/04/09	FLMD	FT	Coulter,	NA1000PCD	1	1	31.80	7	<b>30.658</b>
09/27/09	FLMD	FT	Coulter,	NA1000PSCD	8	2	30.00	14	<b>28.392</b>
09/13/09	FLMD	FT	Macdonald,	NA1000PSCD	3	9	30.40	14	<b>30.875</b>
08/30/09	FLMD	FT	Macdonald,	NA1000PSCD	6	4	30.40	7	<b>28.910</b>
08/23/09	FLMD	FT	Shepherd,	NA1000PSCD	5	5	29.40	7	<b>29.761</b>
08/16/09	FLMD	FT	Macdonald,	NA1000PSCD	8	4	29.80	7	<b>28.157</b>
08/09/09	FLMD	FT	Macdonald,	NA1000PSCD	5	2	29.20	14	<b>31.634</b>
07/26/09	FLMD	GD	Henry, Trevor	NA1000PSCD	1	1	30.60		<b>30.311</b>

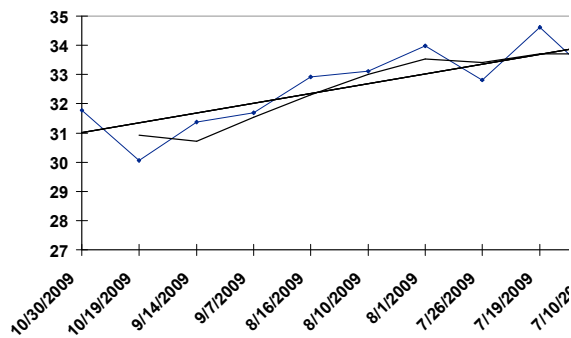


WDB 11/02/09 RACE: 10 1 MILE P

1 MCAPULCO

- b 4YO h PP 1 Condren, Stephen

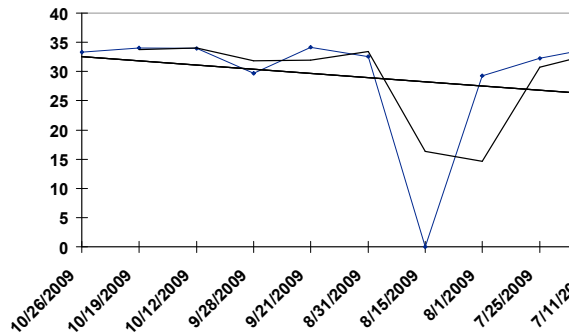
Date	Trk	Cond	Driver	Class	PP	Fin	Last Q	Layoff Days	TS
10/30/09	FLMD	GD	Coulter,	NA600PSCD	2	2	29.20	11	31.778
10/19/09	MOH	FT	Jamieson,	QUA	3	1	28.80	35	30.060
09/14/09	MOH	FT	Condren,	NW15000L6CD	8	8	28.00	7	31.375
09/07/09	MOH	FT	Condren,	NW12000L6CD	7	7	28.20	22	31.698
08/16/09	FLMD	FT	Condren,	PREFERRED-CD	7	6	29.00	6	32.925
08/10/09	MOH	FT	Condren,	NW12000L6CD	2	4	27.60	9	33.101
08/01/09	MOH	FT	Condren,	NW12000L6CD	7	4	26.00	6	33.981
07/26/09	MOH	GD	Condren,	NW20500L6CD	3	5	27.40	7	32.823
07/19/09	MOH	FT	Condren,	NW23500L6CD	7	4	27.00	9	34.609
07/10/09	MOH	FT	Condren,	QUA	5	1	28.00		32.817



WDB 11/02/09 RACE: 10 1 MILE P

2 STRETCH ARTIST - b 4YO g PP 2 Waples, Randall W

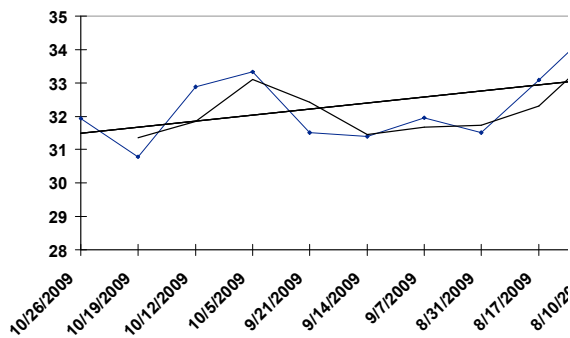
Date	Trk	Cond	Driver	Class	PP	Fin	Last Q	Layoff Days	TS
10/26/09	WDB	FT	Jamieson,	NW12000L6CD	3	7	28.80	7	33.324
10/19/09	WDB	FT	Jamieson,	NW12000L6CD	10	3	27.80	7	34.093
10/12/09	WDB	FT	Jamieson,	NW12000L6CD	7	7	29.80	14	33.924
09/28/09	MOH	GD	Ouellette,	NW13000L6CD	1	9	30.60	7	29.719
09/21/09	MOH	GD	Jamieson,	D-NW16000L6S	2	4	27.80	21	34.207
08/31/09	MOH	FT	Jamieson,	D-NW4R115000	1	7	29.80	16	32.608
08/15/09	WODS	FT	Jamieson,	NW3000L3CD	1	1	30.00	14	
08/01/09	YR	FT	Anderson,	4YO40CLM	7	8	29.00	7	29.265
07/25/09	YR	FT	Anderson,	4YO50CLM	3	5	27.40	14	32.225
07/11/09	YR	FT	Anderson,	4YO50CLM	1	-8	28.60		34.157



WDB 11/02/09 RACE: 10 1 MILE P

3 HARRAHS BEST - b 4YO g PP 3 Zeron, Richard

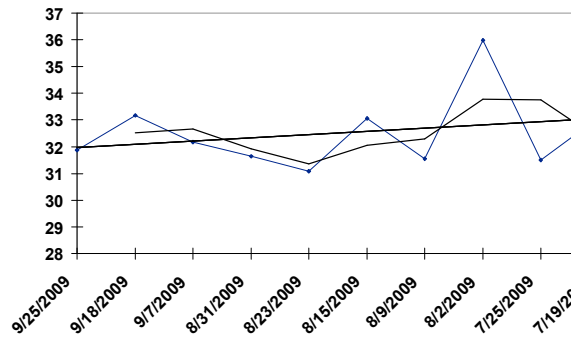
Date	Trk	Cond	Driver	Class	PP	Fin	Last Q	Layoff Days	TS
10/26/09	WDB	FT	Zeron,	NW12000L6CD	2	8	28.20	7	31.941
10/19/09	WDB	FT	Zeron,	NW12000L6CD	7	6	27.80	7	30.790
10/12/09	WDB	FT	Zeron,	NW12000L6CD	1	2	27.80	7	32.886
10/05/09	MOH	FT	Zeron,	NW6000L6CD	1	3	28.60	14	33.329
09/21/09	MOH	GD	Filion,	NW16000L6CD	5	8	28.60	7	31.514
09/14/09	MOH	FT	Filion,	NW15000L6CD	7	9	27.40	7	31.394
09/07/09	MOH	FT	Filion,	NW4R105000L	4	6	28.20	7	31.957
08/31/09	MOH	FT	Zeron,	NW4R115000L	8	8	26.80	14	31.505
08/17/09	MOH	FT	Filion,	NW4R105000L	6	5	27.60	7	33.095
08/10/09	MOH	FT	Zeron,	NW4R100000L	2	4	28.60		34.694



WDB 11/02/09 RACE: 10 1 MILE P

4 AINT NO HEARSAY - b 4YO g PP 4 Macdonald, Mark J

Date	Trk	Cond	Driver	Class	PP	Fin	Last Q	Layoff Days	TS
09/25/09	FLMD	FT	Cadieux,	NA600PSCD	1	6	29.20	7	31.883
09/18/09	FLMD	FT	Cadieux,	NA600PSCD	4	3	29.20	11	33.167
09/07/09	MOH	FT	Zeron,	NW12000L6CD	2	6	28.40	7	32.172
08/31/09	MOH	FT	Miller, David	NW4R115000L	4	6	28.40	8	31.653
08/23/09	MOH	FT	Zeron,	NW6000L6CD	7	2	27.20	8	31.078
08/15/09	MOH	FT	Filion,	NW5000L6CD	3	8	28.40	6	33.063
08/09/09	MOH	FT	Haughan,	NW6000L6CD	1	6	27.60	7	31.540
08/02/09	MOH	FT		NW6000L6CD	0	-7	27.60	8	35.990
07/25/09	HNVR	FT	Mcnaair,	NW4500L3CD	6	5	28.40	6	31.504
07/19/09	MOH	FT	Zeron,	NW12000L6CD	4	7	27.60		33.101

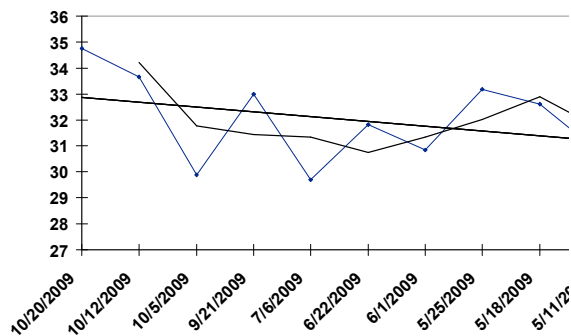


WDB 11/02/09 RACE: 10 1 MILE P

5 BRIMSHEEN

- b 4YO h PP 5 Jamieson, Jody C

Date	Trk	Cond	Driver	Class	PP	Fin	Last Q	Layoff Days	TS
10/20/09	GEOD	FT	Jamieson,	NW4000L5CD	6	1	29.20	8	34.761
10/12/09	WDB	FT	Jamieson,	NW6000L6CD	7	7	29.40	7	33.661
10/05/09	MOH	FT	Jamieson,	NW6000L6CD	9	7	30.40	14	29.890
09/21/09	MOH	FT	Jamieson,	QUA	6	4	28.00	77	32.987
07/06/09	MOH	FT	Ouellette,	NW6000L6CD	4	8	30.20	14	29.687
06/22/09	MOH	FT	Macdonald,	NW6000L6CD	1	7	28.40	21	31.830
06/01/09	MOH	FT	Macdonald,	NW12000L6CD	1	9	30.20	7	30.844
05/25/09	MOH	FT	Saftic,	NW3R50000LCD	2	6	28.80	7	33.190
05/18/09	MOH	FT	Saftic,	NW7500L6CD	5	2	27.60	7	32.621
05/11/09	MOH	FT	Saftic,	QUA	8	4	27.80		30.819

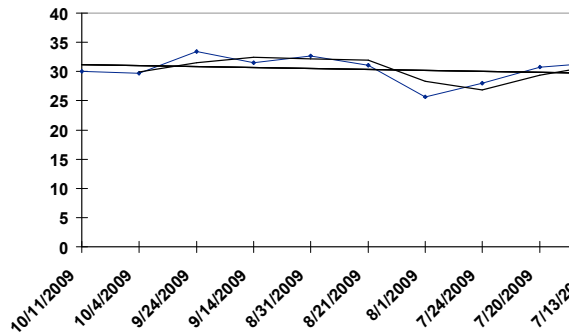


WDB 11/02/09 RACE: 10 1 MILE P

6 CAGEY ATTACK

- b 4YO g PP 6 Fillion, Sylvain R

Date	Trk	Cond	Driver	Class	PP	Fin	Last Q	Layoff Days	TS
10/11/09	WDB	FT	Fillion,	20000CLMHP	3	6	28.40	7	30.064
10/04/09	MOH	GD	Fillion,	20000CLMCD	4	3	28.40	10	29.700
09/24/09	DELA	FT	Merriman,	CNW50000LT	1	4	28.00	10	33.406
09/14/09	HP	FT	Mc Ilmurray,	12500CLHC	5	2	29.40	14	31.543
08/31/09	HP	FT	Mc Ilmurray,	7500CL MOB	1	1	30.00	10	32.731
08/21/09	HP	FT	Massey, Kody	6000CL MOB	6	1	29.00	20	31.053
08/01/09	RP	FT	Headworth,	QUA	3	4	29.80	8	25.625
07/24/09	HP	FT	Mc Ilmurray,	6000CL MOB	5	9	34.60	4	27.998
07/20/09	HP	FT	Sweeney,	7500CL MOB	2	8	29.20	7	30.727
07/13/09	HP	FT	Mc Ilmurray,	7500CL MOB	3	3	29.40		31.503

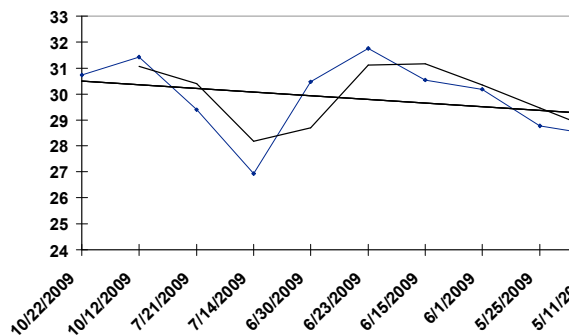




WDB 11/02/09 RACE: 10 1 MILE P

7 HEMINGWAY HUDSON - b 4YO g PP 7 Mayotte, Roger F

Date	Trk	Cond	Driver	Class	PP	Fin	Last Q	Layoff Days	TS
10/22/09	GRVR	FT	Whelan,	NA800PSCD	4	4	27.80	10	30.742
10/12/09	MOH	FT	Mayotte,	QUA	5	4	28.80	83	31.413
07/21/09	GRVR	FT	Sowerby,	NA800PSCD	9	7	30.20	7	29.403
07/14/09	GRVR	FT	Sowerby,	NA800PSCD	7	9	29.00	14	26.931
06/30/09	GRVR	GD	Sowerby,	NA800PSCD	3	2	30.00	7	30.472
06/23/09	GRVR	FT	Sowerby,	NA800PSCD	4	3	28.20	8	31.767
06/15/09	GRVR	FT	Byron,	NW3500LCD	4	1	29.60	14	30.547
06/01/09	GRVR	FT	Byron,	NW3500LCD	4	2	29.60	7	30.176
05/25/09	GRVR	FT	Byron,	NW3500LCD	5	2	29.20	14	28.767
05/11/09	GRVR	FT	Byron,	NW3500LCD	6	4	29.60		28.409

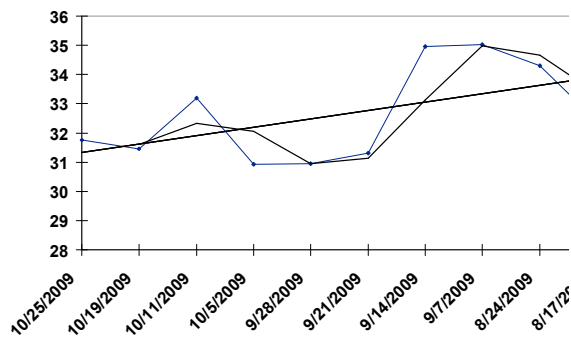


WDB 11/02/09 RACE: 10 1 MILE P

8 PLUMB DUFF

- b 4YO g PP 8 Hudon, Phillip

Date	Trk	Cond	Driver	Class	PP	Fin	Last Q	Layoff Days	TS
10/25/09	FLMD	FT	Whelan,	NA1000PSCD	3	5	29.60	6	31.752
10/19/09	LON	FT	Henry, Trevor	NW6000L3CD	8	7	30.00	8	31.460
10/11/09	FLMD	FT	Zeron, Scott	NA1000PSCD	1	4	29.20	6	33.200
10/05/09	MOH	FT	Hudon,	NW6000L6CD	5	6	29.60	7	30.926
09/28/09	MOH	GD	Zeron,	NW6000L6CD	2	3	29.60	7	30.952
09/21/09	MOH	GD	Zeron, Scott	NW16000L6CD	7	7	28.00	7	31.312
09/14/09	MOH	FT	Jamieson,	NW15000L6CD	1	6	28.40	7	34.953
09/07/09	MOH	FT	Jamieson,	NW3R50000LCD	2	5	28.20	14	35.029
08/24/09	MOH	FT	Brewer, Jason	NW3R50000LCD	4	8	27.80	7	34.296
08/17/09	MOH	FT	Jamieson,	NW3R50000LCD	9	3	28.20		32.393

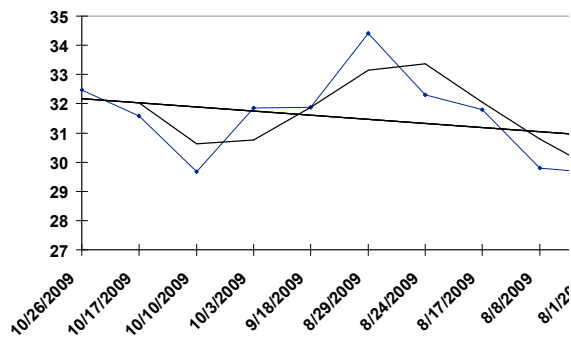


WDB 11/02/09 RACE: 10 1 MILE P

9 KASHABILITY

- b 4YO h PP 9 Galbraith, Clinton G

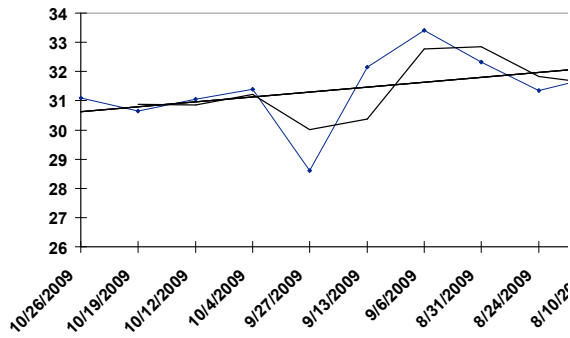
Date	Trk	Cond	Driver	Class	PP	Fin	Last Q	Layoff Days	TS
10/26/09	WDB	FT	Galbraith,	NW3R54000LCD	4	6	27.40	9	32.479
10/17/09	BTVA	FT	Galbraith,	OPENII-III	4	4	29.40	7	31.588
10/10/09	BTVA	FT	Galbraith,	OPEN III	5	4	30.00	7	29.669
10/03/09	BTVA	FT	Galbraith,	NW3000L5HG	2	3	30.00	15	31.864
09/18/09	BTVA	FT	Galbraith,	NW2500L5HG	7	1	30.80	20	31.890
08/29/09	VD	GD		NW2500L5	0	-7	29.80	5	34.401
08/24/09	BTVA	FT	Galbraith,	NW2750L5	3	6	30.80	7	32.311
08/17/09	BTVA	FT	Galbraith,	NW1750L5	5	5	29.60	9	31.792
08/08/09	BTVA	FT	Galbraith,	NW3000L5HG	7	5	29.20	7	29.794
08/01/09	BTVA	FT	Galbraith,	OPEN II	6	7	30.00		29.636



WDB 11/02/09 RACE: 11 1 MILE P

1 LITTLE MAN CAM - br 3YO g PP 1 Filion, Sylvain R

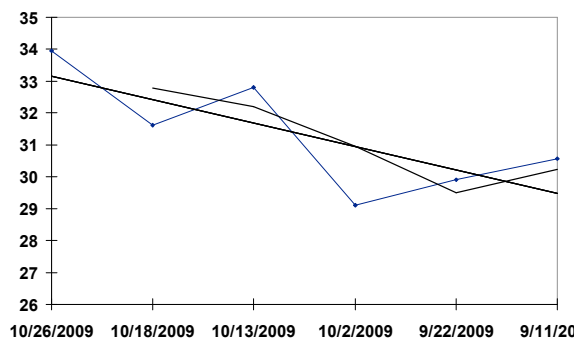
Date	Trk	Cond	Driver	Class	PP	Fin	Last Q	Layoff Days	TS
10/26/09	WDB	FT	Filion,	NW1R7500LCD	6	6	27.60	7	31.090
10/19/09	WDB	FT	Filion,	NW2R17000LCD	1	7	29.40	7	30.652
10/12/09	WDB	FT	Ouellette,	NW2R15500LCD	5	5	27.80	8	31.046
10/04/09	MOH	GD	Ouellette,	NW1R7500LCD	1	1	28.60	7	31.394
09/27/09	MOH	FT	Ouellette,	NW1R7700LCD	8	7	29.20	14	28.606
09/13/09	MOH	FT	Ouellette,	NW1R12000LCD	2	5	29.80	7	32.147
09/06/09	MOH	FT	Ouellette,	NW1R7500LCD	6	6	28.80	6	33.398
08/31/09	MOH	FT	Jamieson,	NW1RLFTCD	4	3	29.20	7	32.324
08/24/09	MOH	FT	Baillargeon,	NW1R7500LCD	5	6	28.80	14	31.337
08/10/09	MOH	FT	Baillargeon,	NW1R7500LCD	4	7	28.40		31.830



WDB 11/02/09 RACE: 11 1 MILE P

2 MR CANOEHEAD - b 3YO g PP 2 Macdonald, Anthony A

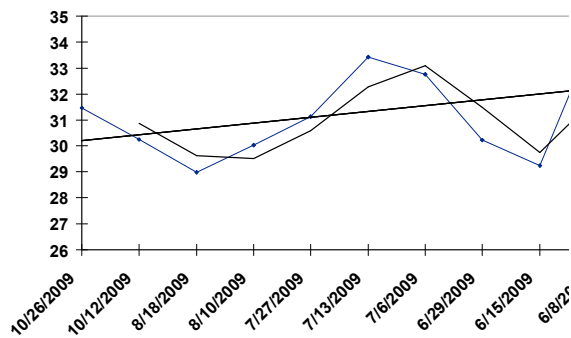
Date	Trk	Cond	Driver	Class	PP	Fin	Last Q	Layoff Days	TS
10/26/09	WDB	FT	Macdonald,	D-NW1R7500L	9	3	27.80	8	33.956
10/18/09	WDB	FT	Macdonald,	D-NW1R9500L	6	4	28.20	5	31.609
10/13/09	GEOD	FT	Macdonald,	NW1R10000L	3	2	29.00	11	32.796
10/02/09	GEOD	GD	Macdonald,	8000CLMCD	3	1	31.60	10	29.108
09/22/09	GEOD	FT	Macdonald,	NW1R10000L	8	7	30.80	11	29.898
09/11/09	MOH	FT	Macdonald,	QUA	6	2	29.40		30.572



WDB 11/02/09 RACE: 11 1 MILE P

3 PACIFIC WARRIOR - br 4YO g PP 3 Waples, Randall W

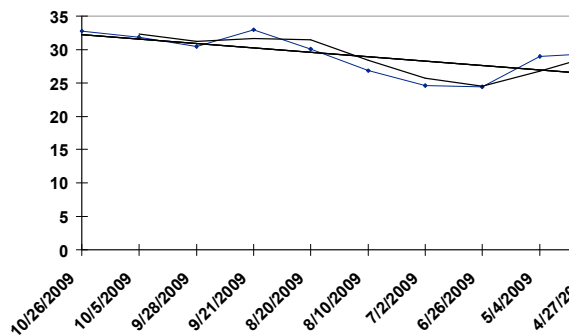
Date	Trk	Cond	Driver	Class	PP	Fin	Last Q	Layoff Days	TS
10/26/09	WDB	FT	Waples,	NW2R15000LCD	5	2	28.20	14	31.478
10/12/09	MOH	FT	Filion,	QUA	6	6	28.80	55	30.250
08/18/09	KD	GD	Skilton,	NW2R30000L	5	7	32.20	8	28.988
08/10/09	MOH	FT	Brown, Doug S	NW2R15000LCD	6	8	28.60	14	30.035
07/27/09	MOH	GD	Waples,	NW2R15000LCD	1	7	30.80	14	31.135
07/13/09	MOH	FT	Waples,	NW2R15500LCD	6	3	28.20	7	33.430
07/06/09	MOH	FT	Waples,	NW2R16000LCD	6	5	27.80	7	32.766
06/29/09	MOH	GD	Waples,	NW2R15000LCD	5	5	28.60	14	30.231
06/15/09	MOH	FT	Waples,	QUA	1	8	29.20	7	29.251
06/08/09	MOH	FT	Macdonell,	NW2R16000LCD	8	8	27.60		34.543



WDB 11/02/09 RACE: 11 1 MILE P

4 HUSTLERS LUCK - b 4YO g PP 4 Ouellette, Luc R

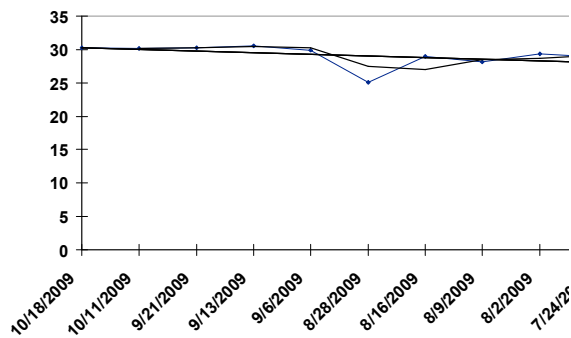
Date	Trk	Cond	Driver	Class	PP	Fin	Last Q	Layoff Days	TS
10/26/09	WDB	FT	Ouellette,	NW2R15000LCD	2	8	28.40	21	32.735
10/05/09	MOH	FT	Hudon,	NW2R15000LCD	3	6	28.60	7	31.881
09/28/09	MOH	GD	Saftic,	NW2R15000LCD	1	4	29.60	7	30.433
09/21/09	MOH	GD	Hudon,	NW2R15000LCD	8	5	28.60	32	32.924
08/20/09	MOH	GD	Saftic,	10000CLM	6	7	28.40	10	30.067
08/10/09	MOH	FT	Saftic,	QUA	8	8	28.40	39	26.836
07/02/09	MOH	FT	Saftic,	10000CLM	9	9	30.20	6	24.611
06/26/09	MOH	FT	Saftic,	QUA	3	6	34.60	53	24.415
05/04/09	MOH	FT	Macdonald,	NW2R15000LCD	9	7	29.80	7	29.011
04/27/09	WDB	FT	Macdonald,	NW1R7500LCD	9	8	29.00		29.463



WDB 11/02/09 RACE: 11 1 MILE P

5 E CAGEE KID - b 3YO g PP 5 Brewer, Jason J

Date	Trk	Cond	Driver	Class	PP	Fin	Last Q	Layoff Days	TS
10/18/09	WR	FT	Forward, Brad	NW1R12000LCD	3	1	31.40	7	30.300
10/11/09	WR	FT	Forward, Brad	NW1R12000LCD	5	1	30.40	20	30.133
09/21/09	DELA	GD	Stahl, Ryan R	NW5000-09	4	1	30.80	8	30.311
09/13/09	RP	FT	Mc Ilmurray,	NW2PMCD	4	1	30.20	7	30.558
09/06/09	RP	FT	Thompson,	NW2PMCD	8	1	29.60	9	29.920
08/28/09	RP	SY	Thompson,	NW2PMCD	4	1	32.80	12	25.051
08/16/09	RP	FT	Thompson,	NW2PMCD	8	4	29.00	7	28.929
08/09/09	RP	FT	Thompson,	NW2PMCD	6	2	33.20	7	28.088
08/02/09	RP	FT	Thompson,	NW2PMCD	1	3	31.60	9	29.359
07/24/09	RP	FT	Thompson,	NW2PMCD	1	2	32.00		28.857

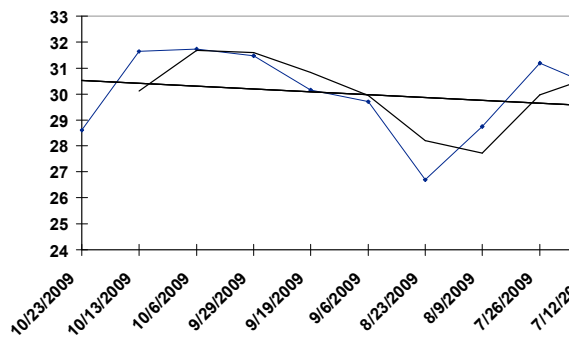




WDB 11/02/09 RACE: 11 1 MILE P

6 DEESTRUCION - b 3YO g PP 6 Gois, Ondrej

Date	Trk	Cond	Driver	Class	PP	Fin	Last Q	Layoff Days	TS
10/23/09	GEOD	SY	Gois, Ondrej	NW1R11500L	7	4	30.20	10	28.612
10/13/09	GEOD	FT	Gois, Ondrej	NW1R10000L	8	3	29.40	7	31.628
10/06/09	GEOD	FT	Gois, Ondrej	NW1R10000L	2	4	30.00	7	31.725
09/29/09	GEOD	GD	Gois, Ondrej	NW1R10000L	1	3	31.00	10	31.477
09/19/09	SAR	FT	Gois, Ondrej	ON-NW6000LCD	3	1	30.60	13	30.168
09/06/09	FLMD	FT	Gois, Ondrej	NW1R6000L	6	4	29.60	14	29.709
08/23/09	FLMD	FT	Gois, Ondrej	NW1R6300L	8	7	32.80	14	26.689
08/09/09	FLMD	FT	Gois, Ondrej	NW1R6000L	7	6	30.20	14	28.759
07/26/09	FLMD	GD	Gois, Ondrej	NW1R6000L	8	3	29.60	14	31.196
07/12/09	FLMD	FT	Gois, Ondrej	NW1R6000L	5	3	31.00		30.265

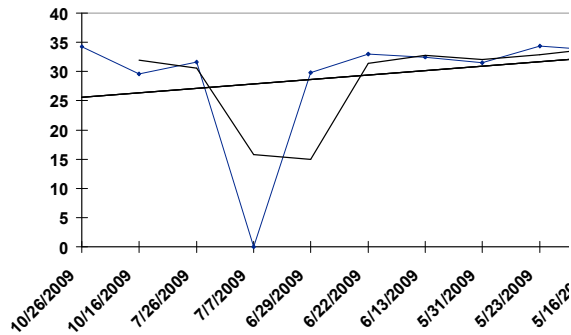


WDB 11/02/09 RACE: 11 1 MILE P

7 WORLD AWAY

- br 3YO g PP 7 Macdonald, Mark J

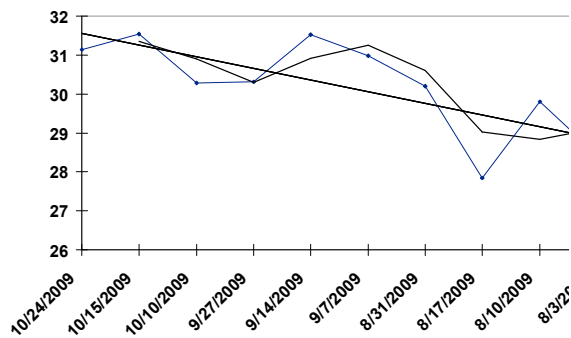
Date	Trk	Cond	Driver	Class	PP	Fin	Last Q	Layoff Days	TS
10/26/09	WDB	FT	Jamieson,	NW2R15000LCD	6	5	28.60	10	34.262
10/16/09	MOH	FT	Jamieson,	QUA	2	3	28.00	82	29.555
07/26/09	MOH	GD		NW2R15000LCD	0	-7	30.20	19	31.584
07/07/09	WODS	FT	Jamieson,	ONSS-RS	1	2	30.00	8	
06/29/09	MOH	GD	Jamieson,	NW2R30000LCD	4	7	30.20	7	29.839
06/22/09	MOH	FT	Jamieson,	3YR-NW50000L	5	6	27.80	9	32.968
06/13/09	MOH	FT	Jamieson,	BURLINGTON	3	7	26.60	13	32.510
05/31/09	RIDC	FT	Jamieson,	ONSS-GE	1	6	30.00	8	31.479
05/23/09	GEOD	FT	Jamieson,	UPPER CANADA	2	5	28.40	7	34.395
05/16/09	GEOD	FT	Jamieson,	UPPER CANADA	3	5	30.60		33.599



WDB 11/02/09 RACE: 11 1 MILE P

8 SONIS GALLEY - gr 3YO g PP 8 Zeron, Richard

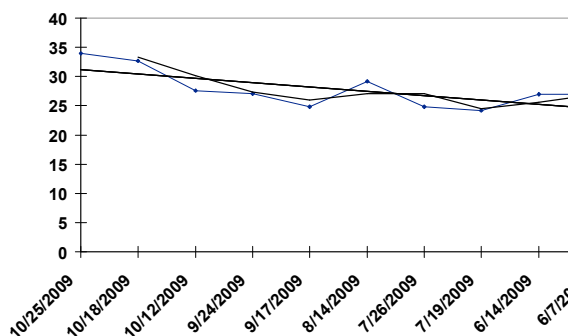
Date	Trk	Cond	Driver	Class	PP	Fin	Last Q	Layoff Days	TS
10/24/09	SAR	FT	Rankin,	NW10000LCD	5	2	29.40	9	31.144
10/15/09	FLMD	FT	Coulter,	NW1R6000L	9	3	30.00	5	31.543
10/10/09	NOR	FT	Mc Ilmurray,	5&UN NW2M3	2	1	31.00	13	30.275
09/27/09	MOH	FT	Saftic,	NW1R7700LCD	1	6	30.00	13	30.320
09/14/09	HP	FT	Mc Ilmurray,	NW2PMRLTCD	7	2	29.60	7	31.517
09/07/09	HP	SY	Mc Ilmurray,	NW2PMRLTCD	4	3	29.00	7	30.981
08/31/09	HP	FT	Merriman,	NW2PMRLTCD	4	4	30.80	14	30.204
08/17/09	HP	FT	Merriman,	NW2PMRLTCD	8	4	31.40	7	27.854
08/10/09	HP	FT	Wright,	NW2PMRLTCD	4	2	29.80	7	29.800
08/03/09	HP	FT	Merriman,	NW2PMRLTCD	9	8	31.00		28.442



WDB 11/02/09 RACE: 11 1 MILE P

9 AS TUFF AS NAILS - b 2YO c PP 9 Jamieson, Jody C

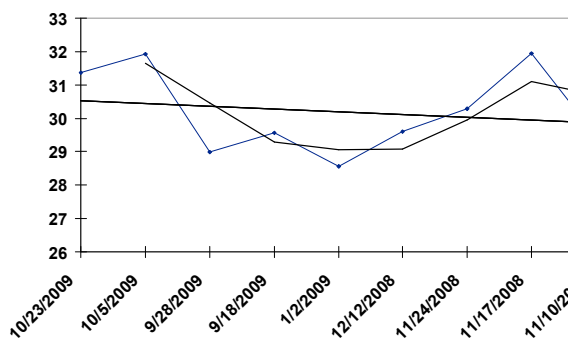
Date	Trk	Cond	Driver	Class	PP	Fin	Last Q	Layoff Days	TS
10/25/09	WDB	FT	Whebby, Marc	NW1R8000LCD	7	2	28.00	7	33.943
10/18/09	WDB	FT	Whebby, Marc	NW1R8000LCD	2	2	27.80	6	32.673
10/12/09	TRUR	FT	Whebby, Marc	NW1R900L	1	1	29.40	18	27.632
09/24/09	CHRT	GD	Arsenault,	NW1RLFT	3	1	30.20	7	27.041
09/17/09	CHRT	FT	Whebby, Marc	QUA	1	1	32.60	34	24.845
08/14/09	CHRT	FT	Whebby, Marc	QUA	5	-8	31.60	19	29.223
07/26/09	TRUR	FT	Whebby, Marc	QUA	3	1	30.80	7	24.798
07/19/09	TRUR	FT	Mackay,	QUA-T&P	3	1	30.00	35	24.188
06/14/09	TRUR	FT	Mackay,	QUA	2	2	29.00	7	26.944
06/07/09	TRUR	FT	Whebby, Marc	QUA	1	4	29.00		26.937



WDB 11/02/09 RACE: 11 1 MILE P

10 WHIPPET INTO SHAPE - b 4YO g PP 10 Moiseyev, Jack G

Date	Trk	Cond	Driver	Class	PP	Fin	Last Q	Layoff Days	TS
10/23/09	MOH	GD	Saftic,	QUA	2	2	28.40	18	31.363
10/05/09	MOH	FT	Saftic,	NW2R1500LCD	8	9	25.20	7	31.927
09/28/09	MOH	GD	Saftic,	NW2R1500LCD	1	5	30.80	10	28.998
09/18/09	MOH	FT	Saftic,	QUA	8	7	28.60	259	29.574
01/02/09	WDB	GD	Saftic,	SNOWSHOE	9	6	29.20	21	28.568
12/12/08	WDB	FT	Macdonell,	VALEDICTORY	3	5	28.80	18	29.607
11/24/08	WDB	SY	Waples,	NW2R1850LCD	2	4	30.00	7	30.295
11/17/08	WDB	FT	Waples,	NW1R7500LCD	5	1	29.40	7	31.935
11/10/08	WDB	FT	Waples,	NW1R7500LCD	4	3	27.80		29.469



WDB 11/02/09

		<u>TODOS STAT</u> <u>LAST RACE</u>	<u>YOUR CHOICE</u>
7	P L COOPER	31.065	_____
3	PIRACY	29.989	_____
5	WHATNBLAZES	28.062	_____
6	STRUCTURE FIRE	27.793	_____
8	MAESTRO SPRINGS	27.186	_____
4	NOW YOU SEE HIM	26.729	_____
1	VINCENNE	26.529	_____
2	ZIGGY JIGGY	23.943	_____

WDB 11/02/09

		<u>TODOS STAT</u> <u>LAST RACE</u>	<u>YOUR CHOICE</u>
6	MASTER CHARGE	33.668	_____
1	SMOKEYS LUCK	33.092	_____
7	GRAVEL CRUSHER	32.892	_____
2	KEEP IT COVERT	32.416	_____
5	MCTAC TOE	31.515	_____
3	FLAMING PRINCE	31.428	_____
4	THE COMEBACK KID	31.096	_____

WDB 11/02/09

		<u>TODOS STAT</u> <u>LAST RACE</u>	<u>YOUR CHOICE</u>
2	BORN BELIEVER	32.041	_____
1	SMASHED	30.652	_____
8	POWER SHOT	29.451	_____
7	FLAMEWALKER	29.378	_____
6	BABE THE HORSE	29.188	_____
4	JCS KADABRA	29.157	_____
5	CHI CHI CHIP	28.875	_____
3	RUSH FAN	25.684	_____



WDB 11/02/09

		<u>TODOS STAT</u> <u>LAST RACE</u>	<u>YOUR CHOICE</u>
2	ROYAL ACADEMY	32.154	_____
7	STRIKING RICH	30.971	_____
10	PRETTY KADABRA	30.608	_____
6	CR SKY FLYER	30.295	_____
5	AMY ATOM	29.926	_____
1	MAPLES LUCKY BOY	28.824	_____
8	FOX VALLEY SUMMIT	28.791	_____
4	CAVIARS DREAM	28.791	_____
3	ROWDY	28.055	_____
9	REGAL VISITOR	27.008	_____

WDB 11/02/09

		<u>TODOS STAT</u> <u>LAST RACE</u>	<u>YOUR CHOICE</u>
9	SILVER KRIS	35.848	_____
4	MCARTLEE	33.342	_____
2	HELLSAPOPPIN	33.098	_____
1	PRESIDENTIALDESIRE	32.582	_____
8	IDEAL GIFT	32.501	_____
3	THE BARBER	31.734	_____
6	SHARK SHOOTER	31.608	_____
5	VOLATILITY FACTOR	30.740	_____
7	CASIMIR INYURFACE	30.553	_____
10	LITTLE MAN	28.146	_____

WDB 11/02/09

		<u>TODOS STAT</u> <u>LAST RACE</u>	<u>YOUR CHOICE</u>
6	KASH N CREDIT	34.062	_____
5	J M IRONSIDE	34.062	_____
7	MARGARITA MARY	31.659	_____
4	GOOD FRIEND	31.634	_____
3	WORLD STAGE	29.901	_____
1	MAGIC FRUIT	29.513	_____
2	RED ZEPPELIN	29.401	_____
8	STORMONT LANCELOT	29.207	_____
10	AUREVOIR GLADIATOR	28.618	_____
9	SOUTHWIND CRUISER	24.552	_____

WDB 11/02/09

	<u>TODOS STAT</u>	<u>YOUR CHOICE</u>
	<u>LAST RACE</u>	
9 FIRE ON THE WATER	35.720	_____
3 AMAZON ART	34.794	_____
4 HAPPY LARRY	34.353	_____
1 WILDCAT ART	34.099	_____
8 MCARTICAL	33.411	_____
6 NOVADANE PEPERCORN	33.055	_____
2 ITS A GOOD THING	32.642	_____
7 SADLER HANOVER	32.404	_____
5 KID CARSON	31.822	_____

WDB 11/02/09

		<u>TODOS STAT</u> <u>LAST RACE</u>	<u>YOUR CHOICE</u>
1	MAJO JUST DO IT	35.679	_____
4	YANKEE LUKE	34.400	_____
8	D I HANOVER	33.274	_____
2	ROAD HAMMER	32.848	_____
9	LAKERS VETT	32.122	_____
7	ARDOR S OPEN	31.684	_____
10	UNCHAINED DESIRE	31.673	_____
6	GALYN KODY	31.071	_____
3	REAL SHOWDOWN	30.788	_____
5	RAVE ON	26.925	_____

WDB 11/02/09

		<u>TODOS STAT</u> <u>LAST RACE</u>	<u>YOUR CHOICE</u>
2	HARTMANN	33.429	_____
1	SUNDOWNER BOB	32.398	_____
3	J S CHISUM	31.934	_____
6	ABBEEY ROAD C	31.856	_____
7	FAMOUS MARK	31.734	_____
5	SUPERFAST STUART	31.609	_____
9	DURABLE DUKE	30.761	_____
10	CAPTAIN SPARROW	30.521	_____
4	JOEY THREE CHINS	29.976	_____
8	JTLADY STRONG	29.969	_____

WDB 11/02/09

		<u>TODOS STAT</u> <u>LAST RACE</u>	<u>YOUR CHOICE</u>
5	BRIMSHEEN	34.761	_____
2	STRETCH ARTIST	33.324	_____
9	KASHABILITY	32.479	_____
3	HARRAHS BEST	31.941	_____
4	AIN'T NO HEARSAY	31.883	_____
1	MCAPULCO	31.778	_____
8	PLUMB DUFF	31.752	_____
7	HEMINGWAY HUDSON	30.742	_____
6	CAGEY ATTACK	30.064	_____

WDB 11/02/09

		<u>TODOS STAT</u> <u>LAST RACE</u>	<u>YOUR CHOICE</u>
7	WORLD AWAY	34.262	_____
2	MR CANOEHEAD	33.956	_____
9	AS TUFF AS NAILS	33.943	_____
4	HUSTLERS LUCK	32.735	_____
3	PACIFIC WARRIOR	31.478	_____
10	WHIPPET INTO SHAPE	31.363	_____
8	SONIS GALLEY	31.144	_____
1	LITTLE MAN CAM	31.090	_____
5	E CAGEE KID	30.300	_____
6	DEESTRUCITION	28.612	_____